

Historical Fall ACT Composite Scores

Arkansas State University

Number of Fall First-Time Freshmen by ACT Composite Scores

Jonesboro Campus

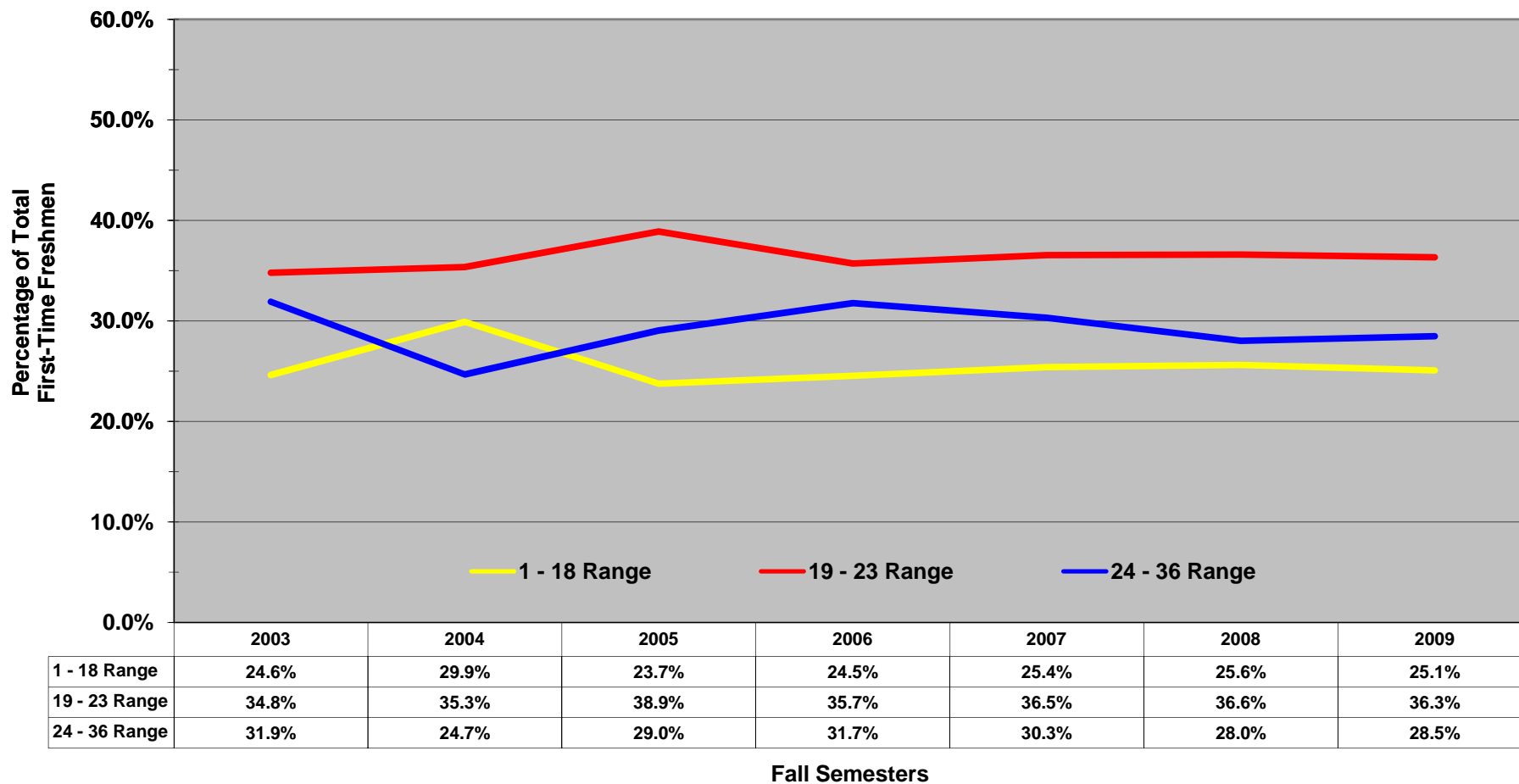
ACT Test Scores	Fall Semesters							2003-2009 Cumulative Total	Cumulative % of Total							2003-2009 % of Total	
	2003	2004	2005	2006	2007	2008	2009		2003	2004	2005	2006	2007	2008	2009		
Above State Standards	36	0	0	0	0	0	0	0	0.0%	0.0%	0.0%	0.0%	0.0%	0.0%	0.0%	0.0%	0.0%
	35	1	0	0	0	0	0	1	0.1%	0.0%	0.0%	0.0%	0.0%	0.0%	0.0%	0.0%	0.0%
	34	0	0	0	1	0	0	1	2	0.1%	0.0%	0.0%	0.1%	0.0%	0.0%	0.1%	0.0%
	33	1	1	3	4	3	3	1	16	0.1%	0.1%	0.2%	0.3%	0.2%	0.2%	0.1%	0.1%
	32	4	2	5	6	5	4	8	34	0.4%	0.2%	0.5%	0.6%	0.5%	0.4%	0.6%	0.3%
	31	12	5	7	12	8	9	17	70	1.2%	0.6%	0.9%	1.3%	0.9%	0.8%	1.6%	0.6%
	30	30	12	16	32	30	21	29	170	3.1%	1.5%	2.0%	3.2%	2.7%	1.9%	3.2%	1.5%
	29	23	21	27	36	34	33	52	226	4.7%	3.0%	3.7%	5.3%	4.6%	3.7%	6.3%	2.0%
	28	39	35	62	63	49	67	50	365	7.2%	5.5%	7.6%	8.9%	7.4%	7.2%	9.2%	3.2%
	27	61	49	64	71	82	77	58	462	11.2%	9.1%	11.6%	13.0%	12.2%	11.3%	12.5%	4.0%
	26	79	51	72	58	72	75	68	475	16.4%	12.8%	16.2%	16.4%	16.3%	15.2%	16.5%	4.1%
	25	101	69	89	114	111	103	99	686	23.0%	17.8%	21.8%	23.0%	22.7%	20.6%	22.2%	5.9%
	24	136	95	115	152	131	141	109	879	31.9%	24.7%	29.0%	31.8%	30.3%	28.0%	28.5%	7.6%
	23	90	68	99	107	103	102	80	649	37.8%	29.6%	35.3%	38.0%	36.2%	33.4%	33.2%	5.6%
	22	108	87	112	120	128	119	101	775	44.9%	35.9%	42.4%	44.9%	43.6%	39.6%	39.0%	6.7%
	21	104	106	147	114	129	157	129	886	51.7%	43.6%	51.6%	51.5%	51.1%	47.9%	46.5%	7.7%
	20	123	117	128	157	137	164	172	998	59.8%	52.1%	59.7%	60.6%	59.0%	56.5%	56.5%	8.6%
19	105	109	130	118	136	154	144	896	66.7%	60.0%	67.9%	67.5%	66.8%	64.6%	64.8%	7.7%	
Below State Standards	18	93	94	75	95	113	113	123	706	72.8%	66.8%	72.7%	73.0%	73.3%	70.6%	71.9%	6.1%
	17	75	91	83	103	97	125	104	678	77.7%	73.4%	77.9%	78.9%	78.9%	77.1%	78.0%	5.9%
	16	69	98	72	86	97	98	81	601	82.2%	80.6%	82.4%	83.9%	84.5%	82.3%	82.7%	5.2%
	15	49	49	63	65	68	90	64	448	85.4%	84.1%	86.4%	87.7%	88.5%	87.0%	86.4%	3.9%
	14	38	43	43	43	42	36	32	277	87.9%	87.2%	89.1%	90.2%	90.9%	88.9%	88.2%	2.4%
	13	33	20	27	22	15	16	17	150	90.1%	88.7%	90.8%	91.4%	91.7%	89.7%	89.2%	1.3%
	12	8	11	10	7	6	5	9	56	90.6%	89.5%	91.5%	91.8%	92.1%	90.0%	89.7%	0.5%
	11	3	2	1	2	2	3	1	14	90.8%	89.6%	91.5%	92.0%	92.2%	90.2%	89.8%	0.1%
	1-10	7	4	2	0	0	1	1	15	91.3%	89.9%	91.7%	92.0%	92.2%	90.2%	89.9%	0.1%
	Total ACT Scores	1,392	1,239	1,452	1,588	1,598	1,716	1,550	10,535	91.3%	89.9%	91.7%	92.0%	92.2%	90.2%	89.9%	91.0%
ASSET/Compass/SAT ⁺	133	139	132	139	135	186	175	1,039	8.7%	10.1%	8.3%	8.0%	7.8%	9.8%	10.1%	9.0%	
Total First-Time Freshmen	1,525	1,378	1,584	1,727	1,733	1,902	1,725	11,574	Percentile Rank								
ASU ACT Composite Average	21.4	20.6	21.3	21.5	21.4	21.2	21.3		75th	25	25	25	24	24	24	24	
									50th	22	22	21	21	21	21	21	
Average High School GPA	3.18	3.11	3.19	3.23	3.17	3.13	3.15		25th	19	19	18	18	18	18	18	

⁺Includes students without test scores.

Disclaimer: It is important to note that the information in this profile may differ from data reported by the Office of Institutional Research, Planning, & Assessment to other federal, state, and regional agencies due to differences in reporting guidelines, reporting definitions, and the timing of when the information was prepared. Analysis prepared by the Office of Institutional Research, Planning, & Assessment

Historical Fall ACT Composite Scores

Proportion of Fall First-Time Freshmen by ACT Composite Score Ranges

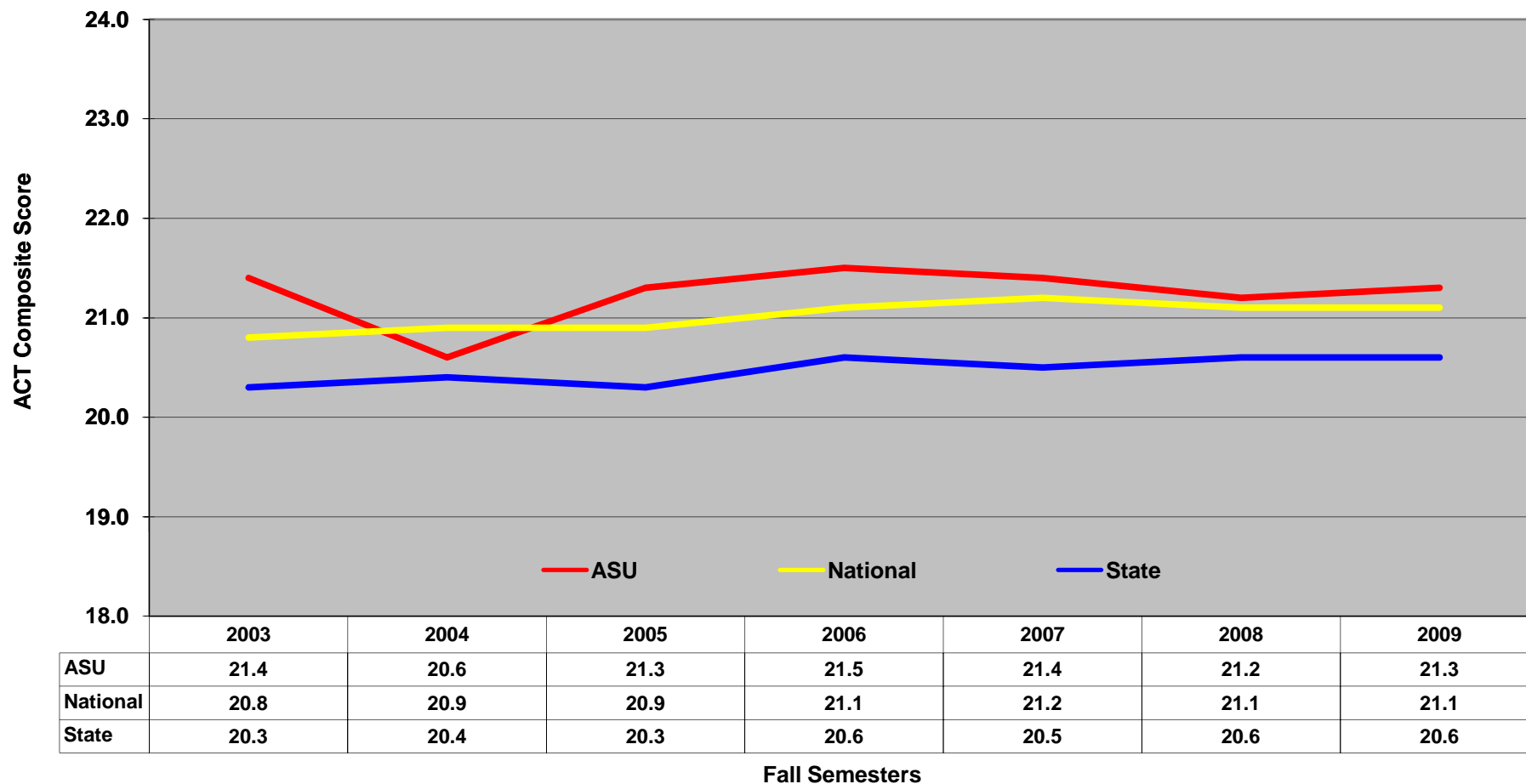


NOTE: Students who did not submit ACT scores are not represented.

Disclaimer: It is important to note that the information in this profile may differ from data reported by the Office of Institutional Research, Planning, & Assessment to other federal, state, and regional agencies due to differences in reporting guidelines, reporting definitions, and the timing of when the information was prepared. Analysis prepared by the Office of Institutional Research, Planning, & Assessment

Historical Fall ACT Composite Averages

Fall First-Time Freshmen by ACT Composite Averages



NOTE: Students who did not submit ACT scores are not represented.

Disclaimer: It is important to note that the information in this profile may differ from data reported by the Office of Institutional Research, Planning, & Assessment to other federal, state, and regional agencies due to differences in reporting guidelines, reporting definitions, and the timing of when the information was prepared. Analysis prepared by the Office of Institutional Research, Planning, & Assessment

Historical Fall ACT Composite Scores - African American Females

Arkansas State University

Number of Fall First-Time Freshmen by ACT Composite Scores

Jonesboro Campus

ACT Test Scores	Fall Semesters							2003-2009 Cumulative Total	Cumulative % of Total							2003-2009 % of Total
	2003	2004	2005	2006	2007	2008	2009		2003	2004	2005	2006	2007	2008	2009	
Above State Standards	36	0	0	0	0	0	0	0	0.0%	0.0%	0.0%	0.0%	0.0%	0.0%	0.0%	0.0%
	35	0	0	0	0	0	0	0	0.0%	0.0%	0.0%	0.0%	0.0%	0.0%	0.0%	0.0%
	34	0	0	0	0	0	0	0	0.0%	0.0%	0.0%	0.0%	0.0%	0.0%	0.0%	0.0%
	33	0	0	0	0	0	0	0	0.0%	0.0%	0.0%	0.0%	0.0%	0.0%	0.0%	0.0%
	32	0	0	0	0	0	0	0	0.0%	0.0%	0.0%	0.0%	0.0%	0.0%	0.0%	0.0%
	31	1	0	0	0	0	0	0	1	0.7%	0.0%	0.0%	0.0%	0.0%	0.0%	0.0%
	30	0	0	0	1	1	0	0	2	0.7%	0.0%	0.0%	0.5%	0.4%	0.0%	0.0%
	29	0	0	0	0	0	0	0	0	0.7%	0.0%	0.0%	0.5%	0.4%	0.0%	0.0%
	28	0	2	1	0	0	0	0	3	0.7%	1.1%	0.5%	0.5%	0.4%	0.0%	0.0%
	27	1	0	2	0	0	2	2	7	1.5%	1.1%	1.4%	0.5%	0.4%	0.9%	1.1%
	26	0	0	0	2	2	1	0	5	1.5%	1.1%	1.4%	1.5%	1.3%	1.3%	1.1%
	25	2	2	4	1	5	3	2	19	2.9%	2.2%	3.3%	2.0%	3.5%	2.7%	2.1%
	24	2	5	2	2	4	11	3	29	4.4%	5.0%	4.3%	3.0%	5.2%	7.5%	3.7%
	23	2	3	3	8	6	5	1	28	5.9%	6.6%	5.7%	7.0%	7.9%	9.7%	4.3%
22	3	6	8	6	13	5	7	48	8.1%	9.9%	9.5%	10.0%	13.5%	11.9%	8.0%	
21	6	3	16	12	12	25	9	83	12.5%	11.6%	17.1%	15.9%	18.8%	23.0%	12.8%	
20	15	19	18	17	21	20	19	129	23.5%	22.1%	25.7%	24.4%	27.9%	31.9%	23.0%	
19	15	11	15	20	24	26	16	127	34.6%	28.2%	32.9%	34.3%	38.4%	43.4%	31.6%	
Below State Standards	18	8	23	16	15	18	24	34	138	40.4%	40.9%	40.5%	41.8%	46.3%	54.0%	49.7%
	17	10	19	19	24	26	30	22	150	47.8%	51.4%	49.5%	53.7%	57.6%	67.3%	61.5%
	16	12	26	22	25	32	26	21	164	56.6%	65.7%	60.0%	66.2%	71.6%	78.8%	72.7%
	15	20	15	26	20	25	20	20	146	71.3%	74.0%	72.4%	76.1%	82.5%	87.6%	83.4%
	14	12	16	19	13	16	12	11	99	80.1%	82.9%	81.4%	82.6%	89.5%	92.9%	89.3%
	13	10	9	13	10	7	3	5	57	87.5%	87.8%	87.6%	87.6%	92.6%	94.2%	92.0%
	12	3	0	6	3	2	2	2	18	89.7%	87.8%	90.5%	89.1%	93.4%	95.1%	93.0%
	11	1	2	0	1	1	1	0	6	90.4%	89.0%	90.5%	89.6%	93.9%	95.6%	93.0%
	1-10	1	0	0	0	0	0	1	2	91.2%	89.0%	90.5%	89.6%	93.9%	95.6%	93.6%
Total ACT Scores	124	161	190	180	215	216	175	1,261	91.2%	89.0%	90.5%	89.6%	93.9%	95.6%	93.6%	92.0%
ASSET/Compass/SAT ⁺	12	20	20	21	14	10	12	109	8.8%	11.0%	9.5%	10.4%	6.1%	4.4%	6.4%	8.0%
Total First-Time Freshmen	136	181	210	201	229	226	187	1,370	Percentile Rank							
ASU ACT Composite Average	17.3	17.5	17.5	17.7	17.9	18.3	17.7	75th	19	20	19	20	20	20	19	
								50th	17	17	17	17	17	18	18	
Average High School GPA	2.91	2.90	2.91	2.96	2.94	2.90	2.84	25th	15	15	15	16	16	16	16	

⁺Includes students without test scores.

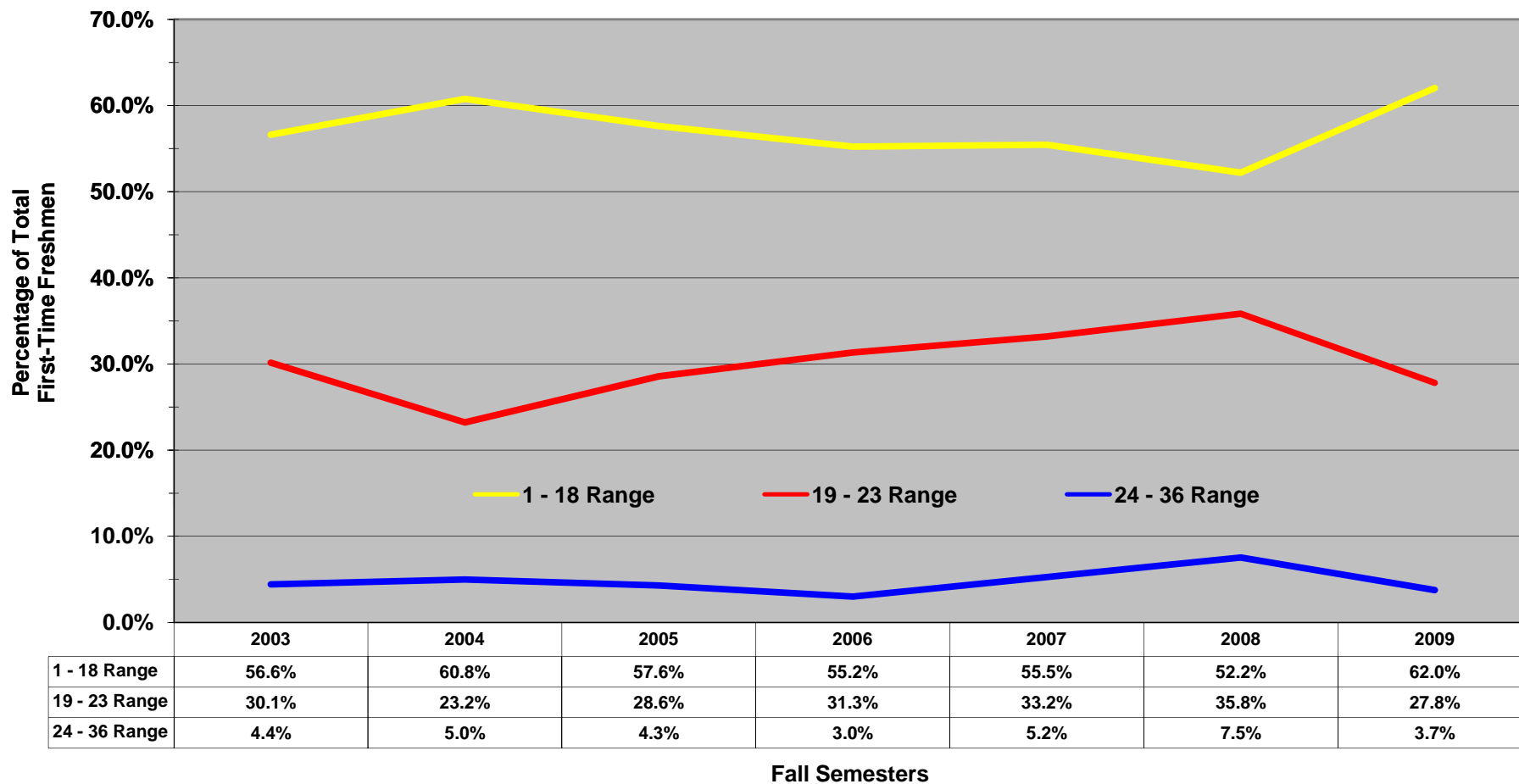
Disclaimer: It is important to note that the information in this profile may differ from data reported by the Office of Institutional Research, Planning, & Assessment to other federal, state, and regional agencies due to differences in reporting guidelines, reporting definitions, and the timing of when the information was prepared. Analysis prepared by the Office of Institutional Research, Planning, & Assessment.

Historical Fall ACT Composite Scores - African American Females

Arkansas State University

Proportion of Fall First-Time Freshmen by ACT Composite Score Ranges

Jonesboro Campus



NOTE: Students who did not submit ACT scores are not represented.

Disclaimer: It is important to note that the information in this profile may differ from data reported by the Office of Institutional Research, Planning, & Assessment to other federal, state, and regional agencies due to differences in reporting guidelines, reporting definitions, and the timing of when the information was prepared. Analysis prepared by the Office of Institutional Research, Planning, & Assessment

Historical Fall ACT Composite Scores - African American Males

Arkansas State University

Number of Fall First-Time Freshmen by ACT Composite Scores

Jonesboro Campus

ACT Test Scores	Fall Semesters							2003-2009 Cumulative Total	Cumulative % of Total							2003-2009 % of Total	
	2003	2004	2005	2006	2007	2008	2009		2003	2004	2005	2006	2007	2008	2009		
Above State Standards	36	0	0	0	0	0	0	0	0.0%	0.0%	0.0%	0.0%	0.0%	0.0%	0.0%	0.0%	0.0%
	35	0	0	0	0	0	0	0	0.0%	0.0%	0.0%	0.0%	0.0%	0.0%	0.0%	0.0%	0.0%
	34	0	0	0	0	0	0	0	0.0%	0.0%	0.0%	0.0%	0.0%	0.0%	0.0%	0.0%	0.0%
	33	0	0	0	0	0	0	0	0.0%	0.0%	0.0%	0.0%	0.0%	0.0%	0.0%	0.0%	0.0%
	32	0	0	0	0	0	0	0	0.0%	0.0%	0.0%	0.0%	0.0%	0.0%	0.0%	0.0%	0.0%
	31	0	0	0	0	0	0	0	0.0%	0.0%	0.0%	0.0%	0.0%	0.0%	0.0%	0.0%	0.0%
	30	1	0	0	0	0	0	0	1	0.9%	0.0%	0.0%	0.0%	0.0%	0.0%	0.0%	0.1%
	29	0	0	0	0	0	0	0	0	0.9%	0.0%	0.0%	0.0%	0.0%	0.0%	0.0%	0.0%
	28	0	1	1	0	0	0	0	2	0.9%	0.7%	0.7%	0.0%	0.0%	0.0%	0.0%	0.2%
	27	0	0	1	2	0	2	0	5	0.9%	0.7%	1.4%	1.2%	0.0%	1.1%	0.0%	0.5%
	26	0	0	0	1	1	0	3	5	0.9%	0.7%	1.4%	1.7%	0.6%	1.1%	2.1%	0.5%
Below State Standards	25	2	2	3	3	2	2	5	19	2.6%	2.0%	3.5%	3.5%	1.8%	2.1%	5.6%	1.8%
	24	0	2	2	3	4	4	2	17	2.6%	3.4%	4.9%	5.2%	4.2%	4.3%	7.0%	1.6%
	23	5	1	4	3	8	4	4	29	7.0%	4.1%	7.7%	7.0%	9.1%	6.4%	9.9%	2.7%
	22	3	3	7	9	3	6	4	35	9.6%	6.1%	12.7%	12.2%	10.9%	9.6%	12.7%	3.3%
	21	6	6	8	7	6	13	9	55	14.8%	10.1%	18.3%	16.3%	14.5%	16.5%	19.0%	5.1%
	20	10	10	16	17	12	17	11	93	23.5%	16.9%	29.6%	26.2%	21.8%	25.5%	26.8%	8.7%
	19	5	12	12	15	12	22	20	98	27.8%	25.0%	38.0%	34.9%	29.1%	37.2%	40.8%	9.1%
	18	11	9	11	24	12	16	18	101	37.4%	31.1%	45.8%	48.8%	36.4%	45.7%	53.5%	9.4%
	17	11	24	15	21	20	30	14	135	47.0%	47.3%	56.3%	61.0%	48.5%	61.7%	63.4%	12.6%
	16	13	22	18	16	27	18	17	131	58.3%	62.2%	69.0%	70.3%	64.8%	71.3%	75.4%	12.2%
	15	9	16	15	20	21	31	15	127	66.1%	73.0%	79.6%	82.0%	77.6%	87.8%	85.9%	11.8%
14	10	10	4	12	17	11	3	67	74.8%	79.7%	82.4%	89.0%	87.9%	93.6%	88.0%	6.3%	
13	12	8	7	5	2	3	3	40	85.2%	85.1%	87.3%	91.9%	89.1%	95.2%	90.1%	3.7%	
12	1	6	4	3	2	2	3	21	86.1%	89.2%	90.1%	93.6%	90.3%	96.3%	92.3%	2.0%	
11	1	0	0	0	1	0	0	2	87.0%	89.2%	90.1%	93.6%	90.9%	96.3%	92.3%	0.2%	
1-10	1	1	1	0	0	0	0	3	87.8%	89.9%	90.8%	93.6%	90.9%	96.3%	92.3%	0.3%	
Total ACT Scores	101	133	129	161	150	181	131	986	87.8%	89.9%	90.8%	93.6%	90.9%	96.3%	92.3%	92.0%	
ASSET/Compass/SAT [†]	14	15	13	11	15	7	11	86	12.2%	10.1%	9.2%	6.4%	9.1%	3.7%	7.7%	8.0%	
Total First-Time Freshmen	115	148	142	172	165	188	142	1,072	Percentile Rank								
ASU ACT Composite Average	17.2	17.0	17.9	17.9	17.5	17.8	18.3	75th	20	19	20	20	19	20	20		
								50th	18	16	17	18	17	17	18		
Average High School GPA	2.61	2.67	2.78	2.70	2.65	2.59	2.71	25th	16	15	15	16	15	15	16		

[†]Includes students without test scores.

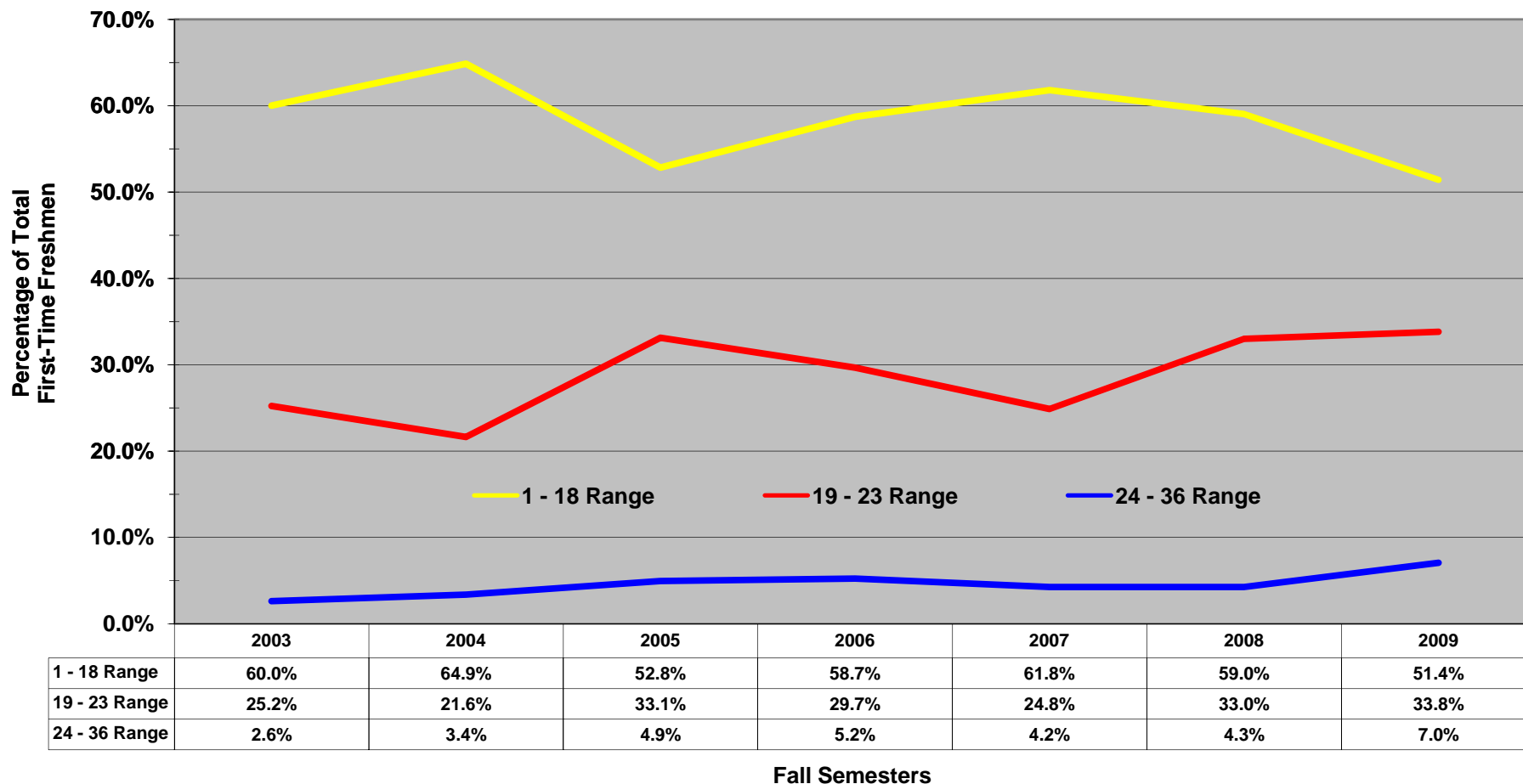
Disclaimer: It is important to note that the information in this profile may differ from data reported by the Office of Institutional Research, Planning, & Assessment to other federal, state, and regional agencies due to differences in reporting guidelines, reporting definitions, and the timing of when the information was prepared. Analysis prepared by the Office of Institutional Research, Planning, & Assessment.

Historical Fall ACT Composite Scores - African American Males

Arkansas State University

Proportion of Fall First-Time Freshmen by ACT Composite Score Ranges

Jonesboro Campus



NOTE: Students who did not submit ACT scores are not represented.

Disclaimer: It is important to note that the information in this profile may differ from data reported by the Office of Institutional Research, Planning, & Assessment to other federal, state, and regional agencies due to differences in reporting guidelines, reporting definitions, and the timing of when the information was prepared. Analysis prepared by the Office of Institutional Research, Planning, & Assessment

Historical Fall ACT Composite Scores - White Females

Arkansas State University

Number of Fall First-Time Freshmen by ACT Composite Scores

Jonesboro Campus

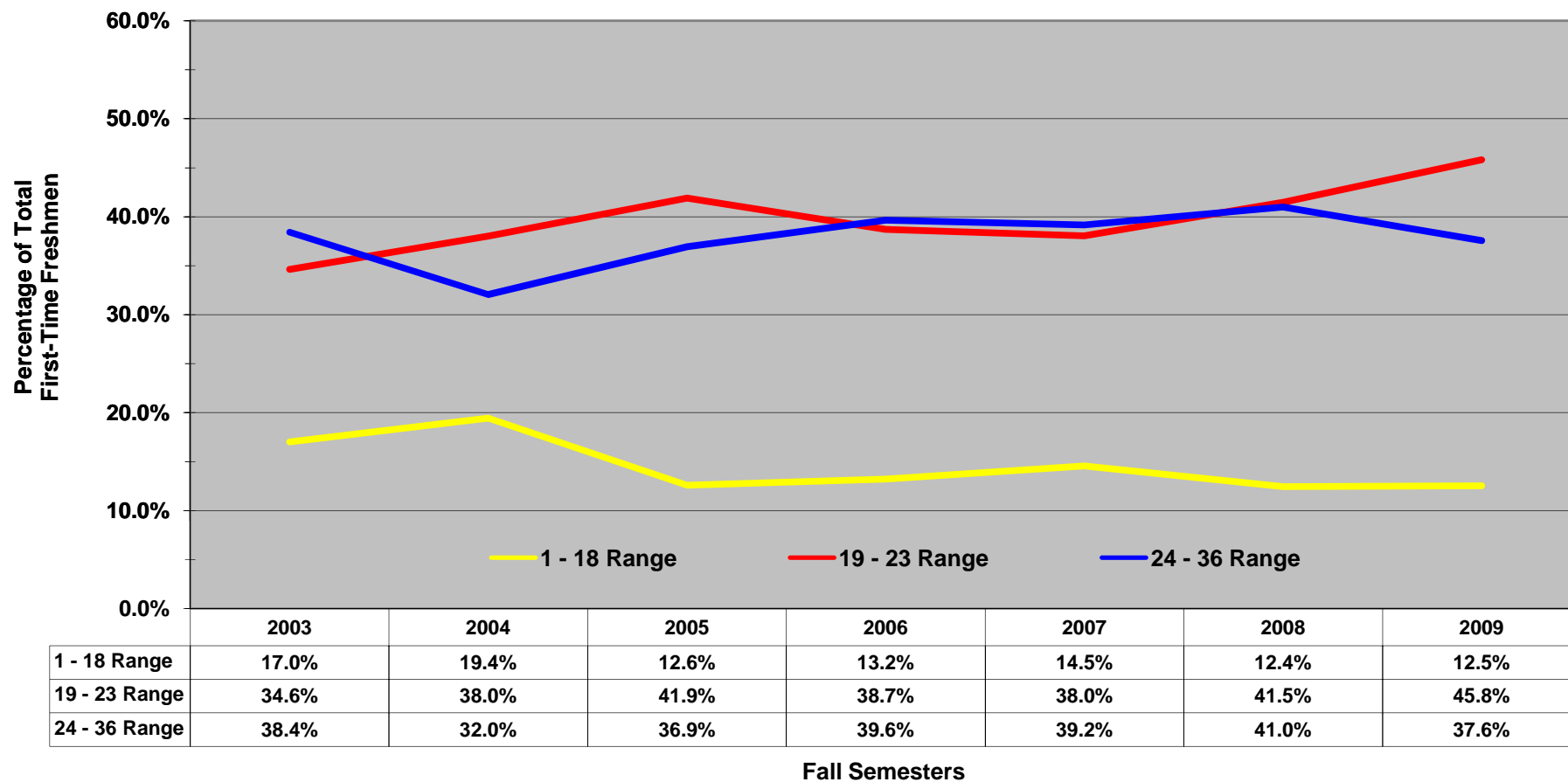
ACT Test Scores	Fall Semesters							2003-2009 Cumulative Total	Cumulative % of Total							2003-2009 % of Total		
	2003	2004	2005	2006	2007	2008	2009		2003	2004	2005	2006	2007	2008	2009			
36	0	0	0	0	0	0	0	0	0.0%	0.0%	0.0%	0.0%	0.0%	0.0%	0.0%	0.0%	0.0%	
35	1	0	0	0	0	0	0	1	0.1%	0.0%	0.0%	0.0%	0.0%	0.0%	0.0%	0.0%	0.1%	
34	0	0	0	0	0	0	1	1	0.1%	0.0%	0.0%	0.0%	0.0%	0.0%	0.2%	0.2%	0.1%	
33	1	1	0	2	2	2	0	2	0.3%	0.2%	0.0%	0.3%	0.3%	0.3%	0.2%	0.3%	0.3%	
32	1	1	2	4	2	2	5	5	0.4%	0.4%	0.3%	0.8%	0.6%	0.6%	1.1%	0.7%	0.7%	
31	4	0	2	4	7	3	6	7	1.0%	0.4%	0.6%	1.4%	1.5%	1.1%	2.2%	1.0%	1.0%	
30	16	8	9	14	16	12	11	16	3.4%	1.8%	2.1%	3.3%	3.8%	3.0%	4.3%	2.2%	2.2%	
29	11	10	15	17	10	14	18	18	5.0%	3.5%	4.5%	5.6%	5.2%	5.3%	7.7%	2.5%	2.5%	
28	17	20	25	42	23	34	23	42	7.5%	7.0%	8.4%	11.3%	8.4%	10.7%	12.0%	5.7%	5.7%	
27	29	25	24	39	40	33	25	40	11.7%	11.4%	12.3%	16.6%	14.0%	15.9%	16.6%	5.4%	5.4%	
26	47	34	40	26	42	39	30	47	18.6%	17.3%	18.6%	20.2%	19.9%	22.2%	22.2%	6.4%	6.4%	
25	59	38	51	57	60	52	38	60	27.3%	24.0%	26.8%	27.9%	28.3%	30.5%	29.3%	8.2%	8.2%	
24	76	46	64	86	78	66	44	86	38.4%	32.0%	36.9%	39.6%	39.2%	41.0%	37.6%	11.7%	11.7%	
23	44	31	51	63	45	44	36	63	44.9%	37.5%	45.1%	48.2%	45.5%	48.0%	44.3%	8.6%	8.6%	
22	50	39	55	67	60	57	43	67	52.2%	44.3%	53.8%	57.4%	53.8%	57.1%	52.3%	9.1%	9.1%	
21	47	61	60	48	64	57	55	64	59.1%	55.0%	63.4%	63.9%	62.8%	66.2%	62.6%	8.7%	8.7%	
20	48	46	50	61	57	59	62	62	66.1%	63.0%	71.3%	72.2%	70.8%	75.6%	74.2%	8.4%	8.4%	
19	47	40	47	45	46	43	49	49	73.0%	70.1%	78.8%	78.3%	77.2%	82.5%	83.4%	6.7%	6.7%	
Below State Standards	18	39	35	26	21	43	29	29	43	78.7%	76.2%	83.0%	81.2%	83.2%	87.1%	88.8%	5.9%	5.9%
	17	23	29	20	28	21	21	19	29	82.1%	81.3%	86.1%	85.0%	86.2%	90.4%	92.3%	4.0%	4.0%
	16	28	24	12	27	18	15	8	28	86.2%	85.5%	88.1%	88.7%	88.7%	92.8%	93.8%	3.8%	3.8%
	15	13	10	9	12	15	8	7	15	88.1%	87.2%	89.5%	90.3%	90.8%	94.1%	95.1%	2.0%	2.0%
	14	8	5	7	6	6	3	3	8	89.3%	88.1%	90.6%	91.1%	91.6%	94.6%	95.7%	1.1%	1.1%
	13	1	2	4	2	1	1	1	4	89.4%	88.4%	91.2%	91.4%	91.7%	94.7%	95.9%	0.5%	0.5%
	12	1	3	0	0	0	1	0	3	89.6%	89.0%	91.2%	91.4%	91.7%	94.9%	95.9%	0.4%	0.4%
	11	0	0	0	1	0	0	0	1	89.6%	89.0%	91.2%	91.6%	91.7%	94.9%	95.9%	0.1%	0.1%
1-10	3	3	1	0	0	0	0	3	90.0%	89.5%	91.4%	91.6%	91.7%	94.9%	95.9%	0.4%	0.4%	
Total ACT Scores	614	511	574	672	656	595	513	672	90.0%	89.5%	91.4%	91.6%	91.7%	94.9%	95.9%	91.6%	91.6%	
ASSET/Compass/SAT ⁺	68	60	54	62	59	32	22	68	10.0%	10.5%	8.6%	8.4%	8.3%	5.1%	4.1%	9.3%	9.3%	
Total First-Time Freshmen	682	571	628	734	715	627	535	734	Percentile Rank									
ASU ACT Composite Average	22.2	21.8	22.4	22.7	22.5	22.7	22.6	75th	25	25	25	24	25	25	25			
								50th	23	22	21	22	22	23	22			
Average High School GPA	3.37	3.29	3.39	3.44	3.39	3.43	3.42	25th	20	19	19	20	20	20	20			

*Includes students without test scores.

Disclaimer: It is important to note that the information in this profile may differ from data reported by the Office of Institutional Research, Planning, & Assessment to other federal, state, and regional agencies due to differences in reporting guidelines, reporting definitions, and the timing of when the information was prepared. Analysis prepared by the Office of Institutional Research, Planning, & Assessment

Historical Fall ACT Composite Scores - White Females

Proportion of Fall First-Time Freshmen by ACT Composite Score Ranges



NOTE: Students who did not submit ACT scores are not represented.

Disclaimer: It is important to note that the information in this profile may differ from data reported by the Office of Institutional Research, Planning, & Assessment to other federal, state, and regional agencies due to differences in reporting guidelines, reporting definitions, and the timing of when the information was prepared. Analysis prepared by the Office of Institutional Research, Planning, & Assessment

Historical Fall ACT Composite Scores - White Males

Arkansas State University

Number of Fall First-Time Freshmen by ACT Composite Scores

Jonesboro Campus

ACT Test Scores	Fall Semesters							2003-2009 Cumulative Total	Cumulative % of Total							2003-2009 % of Total
	2003	2004	2005	2006	2007	2008	2009		2003	2004	2005	2006	2007	2008	2009	
Above State Standards	36	0	0	0	0	0	0	0	0.0%	0.0%	0.0%	0.0%	0.0%	0.0%	0.0%	0.0%
	35	0	0	0	0	0	0	0	0.0%	0.0%	0.0%	0.0%	0.0%	0.0%	0.0%	0.0%
	34	0	0	0	1	0	0	0	0.0%	0.0%	0.0%	0.2%	0.0%	0.0%	0.0%	0.0%
	33	0	0	3	2	1	1	1	8	0.0%	0.0%	0.6%	0.5%	0.2%	0.2%	0.2%
	32	1	1	3	1	2	1	3	12	0.2%	0.3%	1.2%	0.7%	0.6%	0.4%	0.8%
	31	7	4	4	7	1	5	10	38	1.6%	1.3%	2.0%	2.0%	0.7%	1.5%	2.8%
	30	12	4	7	13	11	9	14	70	3.9%	2.3%	3.3%	4.4%	2.8%	3.4%	5.6%
	29	10	11	11	18	19	17	30	116	5.9%	5.1%	5.5%	7.7%	6.3%	6.9%	11.6%
	28	22	12	33	21	23	29	24	164	10.2%	8.1%	11.9%	11.5%	10.5%	13.1%	16.5%
	27	26	23	35	29	38	33	19	203	15.3%	14.0%	18.8%	16.8%	17.5%	20.0%	20.3%
	26	30	16	27	29	25	27	31	185	21.1%	18.1%	24.1%	22.1%	22.1%	25.7%	26.5%
	25	37	22	26	50	41	31	48	255	28.4%	23.7%	29.2%	31.3%	29.7%	32.2%	36.1%
	24	54	37	46	58	43	45	45	328	38.9%	33.1%	38.2%	41.9%	37.6%	41.7%	45.2%
	23	34	25	36	30	36	33	29	223	45.6%	39.4%	45.2%	47.3%	44.2%	48.6%	51.0%
22	43	34	39	32	50	34	37	269	54.0%	48.1%	52.8%	53.2%	53.4%	55.8%	58.4%	
21	38	31	57	42	42	42	41	293	61.4%	56.0%	64.0%	60.9%	61.1%	64.6%	66.7%	
20	46	35	38	52	41	36	44	292	70.5%	64.9%	71.4%	70.4%	68.7%	72.2%	75.5%	
19	34	37	42	35	50	34	36	268	77.1%	74.3%	79.6%	76.8%	77.9%	79.4%	82.7%	
Below State Standards	18	28	24	16	26	35	21	22	172	82.6%	80.4%	82.8%	81.5%	84.3%	83.8%	87.1%
	17	26	15	21	27	24	21	27	161	87.7%	84.2%	86.9%	86.5%	88.8%	88.2%	92.6%
	16	13	25	15	15	19	14	9	110	90.2%	90.6%	89.8%	89.2%	92.3%	91.2%	94.4%
	15	6	5	11	12	5	11	3	53	91.4%	91.9%	92.0%	91.4%	93.2%	93.5%	95.0%
	14	6	7	8	10	3	4	3	41	92.6%	93.6%	93.5%	93.2%	93.7%	94.3%	95.6%
	13	4	0	2	4	2	1	2	15	93.3%	93.6%	93.9%	94.0%	94.1%	94.5%	96.0%
	12	1	1	0	1	1	0	0	4	93.5%	93.9%	93.9%	94.1%	94.3%	94.5%	96.0%
	11	1	0	1	0	0	0	0	2	93.7%	93.9%	94.1%	94.1%	94.3%	94.5%	96.0%
1-10	2	0	0	0	0	0	0	2	94.1%	93.9%	94.1%	94.1%	94.3%	94.5%	96.0%	
Total ACT Scores	481	369	481	515	512	449	478	3,285	94.1%	93.9%	94.1%	94.1%	94.3%	94.5%	96.0%	94.5%
ASSET/Compass/SAT ⁺	30	24	30	32	31	26	20	193	5.9%	6.1%	5.9%	5.9%	5.7%	5.5%	4.0%	5.5%
Total First-Time Freshmen	511	393	511	547	543	475	498	3,478	Percentile Rank							
ASU ACT Composite Average	22.3	21.8	22.5	22.4	22.4	22.7	23.1	75th	26	25	24	25	25	26	26	
								50th	24	22	22	23	22	23	23	
Average High School GPA	3.14	3.14	3.20	3.23	3.15	3.19	3.23	25th	20	19	19	20	19	20	20	

⁺Includes students without test scores.

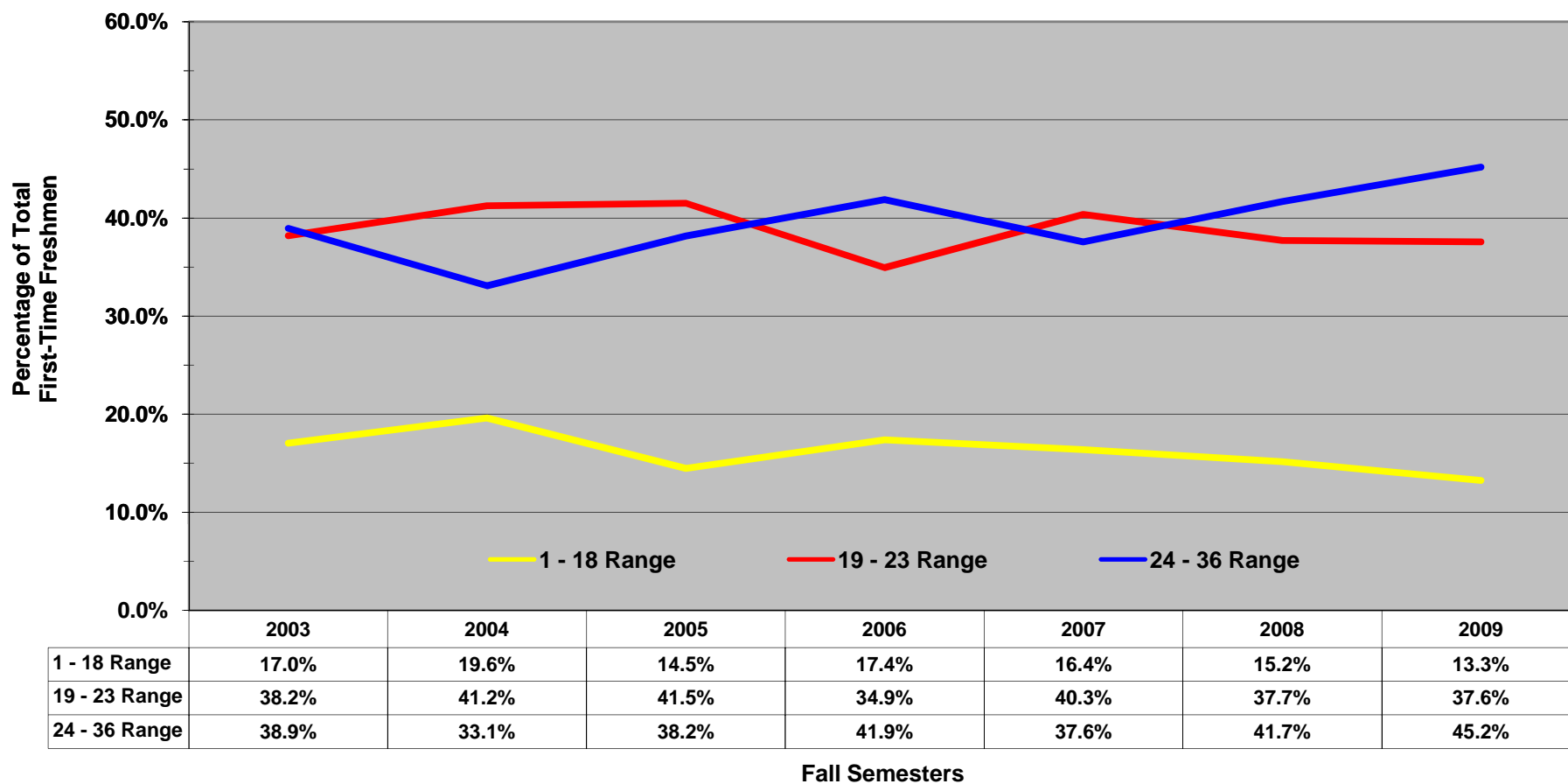
Disclaimer: It is important to note that the information in this profile may differ from data reported by the Office of Institutional Research, Planning, & Assessment to other federal, state, and regional agencies due to differences in reporting guidelines, reporting definitions, and the timing of when the information was prepared. Analysis prepared by the Office of Institutional Research, Planning, & Assessment

Historical Fall ACT Composite Scores - White Males

Arkansas State University

Proportion of Fall First-Time Freshmen by ACT Composite Score Ranges

Jonesboro Campus



NOTE: Students who did not submit ACT scores are not represented.

Disclaimer: It is important to note that the information in this profile may differ from data reported by the Office of Institutional Research, Planning, & Assessment to other federal, state, and regional agencies due to differences in reporting guidelines, reporting definitions, and the timing of when the information was prepared. Analysis prepared by the Office of Institutional Research, Planning, & Assessment

Historical Fall ACT Composite Scores - Other Females*

Arkansas State University

Number of Fall First-Time Freshmen by ACT Composite Scores

Jonesboro Campus

ACT Test Scores	Fall Semesters							2003-2009 Cumulative Total	% of Total							2003-2009 % of Total	
	2003	2004	2005	2006	2007	2008	2009		2003	2004	2005	2006	2007	2008	2009		
36	0	0	0	0	0	0	0	0	0.0%	0.0%	0.0%	0.0%	0.0%	0.0%	0.0%	0.0%	0.0%
35	0	0	0	0	0	0	0	0	0.0%	0.0%	0.0%	0.0%	0.0%	0.0%	0.0%	0.0%	0.0%
34	0	0	0	0	0	0	0	0	0.0%	0.0%	0.0%	0.0%	0.0%	0.0%	0.0%	0.0%	0.0%
33	0	0	0	0	0	0	0	0	0.0%	0.0%	0.0%	0.0%	0.0%	0.0%	0.0%	0.0%	0.0%
32	0	0	0	1	1	0	0	2	0.0%	0.0%	0.0%	2.2%	2.1%	0.0%	0.0%	0.3%	
31	0	1	1	1	0	0	1	4	0.0%	2.3%	2.2%	4.4%	2.1%	0.0%	0.5%	0.7%	
30	1	0	0	2	1	0	2	6	2.3%	2.3%	2.2%	8.9%	4.2%	0.0%	1.6%	1.0%	
29	2	0	0	0	3	1	3	9	6.8%	2.3%	2.2%	8.9%	10.4%	0.5%	3.2%	1.5%	
28	0	0	2	0	3	3	2	10	6.8%	2.3%	6.5%	8.9%	16.7%	2.0%	4.3%	1.6%	
27	2	1	1	1	3	4	5	17	11.4%	4.5%	8.7%	11.1%	22.9%	4.0%	7.0%	2.8%	
26	1	0	4	0	2	5	1	13	13.6%	4.5%	17.4%	11.1%	27.1%	6.6%	7.5%	2.1%	
25	0	2	2	2	1	8	2	17	13.6%	9.1%	21.7%	15.6%	29.2%	10.6%	8.6%	2.8%	
24	1	1	1	3	2	10	7	25	15.9%	11.4%	23.9%	22.2%	33.3%	15.7%	12.4%	4.1%	
23	4	3	3	3	3	14	6	36	25.0%	18.2%	30.4%	28.9%	39.6%	22.7%	15.6%	5.9%	
22	6	1	1	4	1	13	3	29	38.6%	20.5%	32.6%	37.8%	41.7%	29.3%	17.2%	4.7%	
21	5	1	3	2	4	9	4	28	50.0%	22.7%	39.1%	42.2%	50.0%	33.8%	19.4%	4.6%	
20	3	5	2	5	3	15	16	49	56.8%	34.1%	43.5%	53.3%	56.3%	41.4%	28.0%	8.0%	
19	3	3	5	1	4	14	15	45	63.6%	40.9%	54.3%	55.6%	64.6%	48.5%	36.0%	7.4%	
Above State Standards																	
18	3	2	5	6	2	10	15	43	70.5%	45.5%	65.2%	68.9%	68.8%	53.5%	44.1%	7.0%	
17	3	2	3	1	4	9	11	33	77.3%	50.0%	71.7%	71.1%	77.1%	58.1%	50.0%	5.4%	
16	0	1	1	3	1	12	14	32	77.3%	52.3%	73.9%	77.8%	79.2%	64.1%	57.5%	5.2%	
15	0	2	1	0	0	7	10	20	77.3%	56.8%	76.1%	77.8%	79.2%	67.7%	62.9%	3.3%	
14	1	4	2	1	0	2	9	19	79.5%	65.9%	80.4%	80.0%	79.2%	68.7%	67.7%	3.1%	
13	3	0	1	0	2	3	4	13	86.4%	65.9%	82.6%	80.0%	83.3%	70.2%	69.9%	2.1%	
12	1	1	0	0	1	0	3	6	88.6%	68.2%	82.6%	80.0%	85.4%	70.2%	71.5%	1.0%	
11	0	0	0	0	0	1	1	2	88.6%	68.2%	82.6%	80.0%	85.4%	70.7%	72.0%	0.3%	
1-10	0	0	0	0	0	0	0	0	88.6%	68.2%	82.6%	80.0%	85.4%	70.7%	72.0%	0.0%	
Total ACT Scores	39	30	38	36	41	140	134	458	88.6%	68.2%	82.6%	80.0%	85.4%	70.7%	72.0%	75.0%	
ASSET/Compass/SAT [†]	5	14	8	9	7	58	52	153	11.4%	31.8%	17.4%	20.0%	14.6%	29.3%	28.0%	25.0%	
Total First-Time Freshmen	44	44	46	45	48	198	186	611	Percentile Rank								
ASU ACT Composite Average	20.7	19.5	20.9	21.6	22.1	20.4	19.1	75th	24	23	23	23	27	23	21		
								50th	19	21	19	21	21	20	18		
Average High School GPA	3.18	3.04	3.29	3.23	3.34	3.08	2.94	25th	17	18	15	18	19	18	16		

*NOTE: Other Females represents all other races besides African Americans and White Americans.

[†]Includes students without test scores.

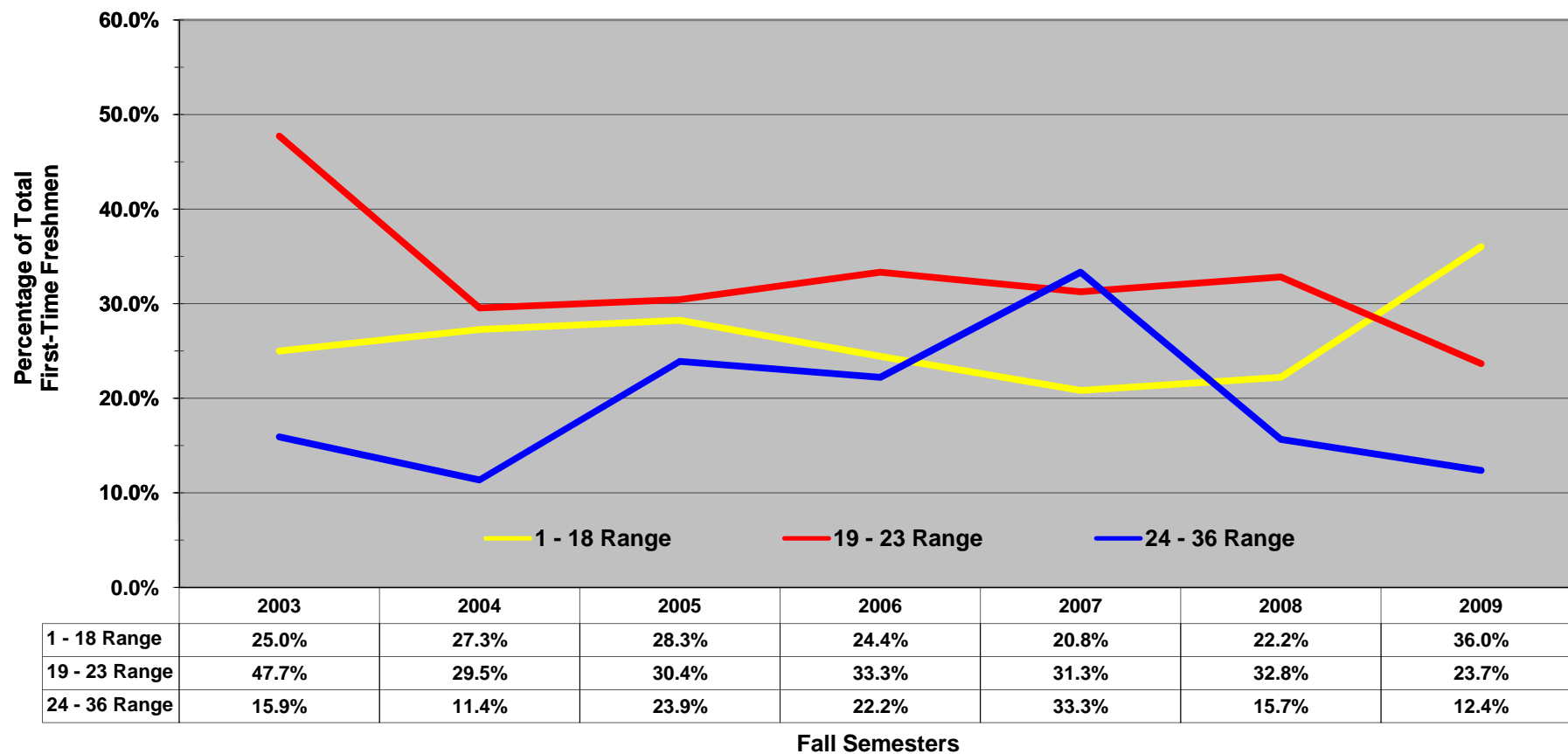
Disclaimer: It is important to note that the information in this profile may differ from data reported by the Office of Institutional Research, Planning, & Assessment to other federal, state, and regional agencies due to differences in reporting guidelines, reporting definitions, and the timing of when the information was prepared. Analysis prepared by the Office of Institutional Research, Planning, & Assessment

Historical Fall ACT Composite Scores - Other Females*

Arkansas State University

Proportion of Fall First-Time Freshmen by ACT Composite Score Ranges

Jonesboro Campus



*NOTE: Other Females represents all other races besides African Americans and White Americans.

Disclaimer: It is important to note that the information in this profile may differ from data reported by the Office of Institutional Research, Planning, & Assessment to other federal, state, and regional agencies due to differences in reporting guidelines, reporting definitions, and the timing of when the information was prepared. Analysis prepared by the Office of Institutional Research, Planning, & Assessment

Historical Fall ACT Composite Scores - Other Males*

Arkansas State University

Number of Fall First-Time Freshmen by ACT Composite Scores

Jonesboro Campus

ACT Test Scores	Fall Semesters							2003-2009 Cumulative Total	Cumulative % of Total							2003-2009 % of Total
	2003	2004	2005	2006	2007	2008	2009		2003	2004	2005	2006	2007	2008	2009	
Above State Standards	36	0	0	0	0	0	0	0	0.0%	0.0%	0.0%	0.0%	0.0%	0.0%	0.0%	0.0%
	35	0	0	0	0	0	0	0	0.0%	0.0%	0.0%	0.0%	0.0%	0.0%	0.0%	0.0%
	34	0	0	0	0	0	0	0	0.0%	0.0%	0.0%	0.0%	0.0%	0.0%	0.0%	0.0%
	33	0	0	0	0	0	0	0	0.0%	0.0%	0.0%	0.0%	0.0%	0.0%	0.0%	0.0%
	32	2	0	0	0	0	1	0	3	5.4%	0.0%	0.0%	0.0%	0.0%	0.5%	0.0%
	31	0	0	0	0	0	1	0	1	5.4%	0.0%	0.0%	0.0%	0.0%	1.1%	0.0%
	30	0	0	0	2	1	0	2	5	5.4%	0.0%	0.0%	7.1%	3.0%	1.1%	1.1%
	29	0	0	1	1	2	1	1	6	5.4%	0.0%	2.1%	10.7%	9.1%	1.6%	1.7%
	28	0	0	0	0	0	1	1	2	5.4%	0.0%	2.1%	10.7%	9.1%	2.1%	2.3%
	27	3	0	1	0	1	3	7	15	13.5%	0.0%	4.3%	10.7%	12.1%	3.7%	6.2%
	26	1	1	1	0	0	3	3	9	16.2%	2.4%	6.4%	10.7%	12.1%	5.3%	7.9%
	25	1	3	3	1	2	7	4	21	18.9%	9.8%	12.8%	14.3%	18.2%	9.0%	10.2%
	24	3	4	0	0	0	5	8	20	27.0%	19.5%	12.8%	14.3%	18.2%	11.7%	14.7%
	23	1	5	2	0	5	2	4	19	29.7%	31.7%	17.0%	14.3%	33.3%	12.8%	16.9%
22	3	4	2	2	1	4	7	23	37.8%	41.5%	21.3%	21.4%	36.4%	14.9%	20.9%	
21	2	4	3	3	1	11	11	35	43.2%	51.2%	27.7%	32.1%	39.4%	20.7%	27.1%	
20	1	2	4	5	3	17	20	52	45.9%	56.1%	36.2%	50.0%	48.5%	29.8%	38.4%	
19	1	6	9	2	0	15	8	41	48.6%	70.7%	55.3%	57.1%	48.5%	37.8%	42.9%	
Below State Standards	18	4	1	1	3	3	13	5	30	59.5%	73.2%	57.4%	67.9%	57.6%	44.7%	45.8%
	17	2	2	5	2	2	14	11	38	64.9%	78.0%	68.1%	75.0%	63.6%	52.1%	52.0%
	16	3	0	4	0	0	13	12	32	73.0%	78.0%	76.6%	75.0%	63.6%	59.0%	58.8%
	15	1	1	1	1	2	13	9	28	75.7%	80.5%	78.7%	78.6%	69.7%	66.0%	63.8%
	14	1	1	3	1	0	4	3	13	78.4%	82.9%	85.1%	82.1%	69.7%	68.1%	65.5%
	13	3	1	0	1	1	5	2	13	86.5%	85.4%	85.1%	85.7%	72.7%	70.7%	66.7%
	12	1	0	0	0	0	0	1	2	89.2%	85.4%	85.1%	85.7%	72.7%	70.7%	67.2%
	11	0	0	0	0	0	1	0	1	89.2%	85.4%	85.1%	85.7%	72.7%	71.3%	67.2%
1-10	0	0	0	0	0	1	0	1	89.2%	85.4%	85.1%	85.7%	72.7%	71.8%	67.2%	
Total ACT Scores	33	35	40	24	24	135	119	410	89.2%	85.4%	85.1%	85.7%	72.7%	71.8%	67.2%	74.4%
ASSET/Compass/SAT ⁺	4	6	7	4	9	53	58	141	10.8%	14.6%	14.9%	14.3%	27.3%	28.2%	32.8%	25.6%
Total First-Time Freshmen	37	41	47	28	33	188	177	551	Percentile Rank							
ASU ACT Composite Average	20.4	20.9	19.6	20.3	21.4	19.1	20.1	75th	25	24	23	22	23	21	22	
								50th	21	20	21	20	21	19	20	
Average High School GPA	2.92	3.03	2.91	3.06	2.99	2.73	2.88	25th	16	16	19	19	18	16	17	

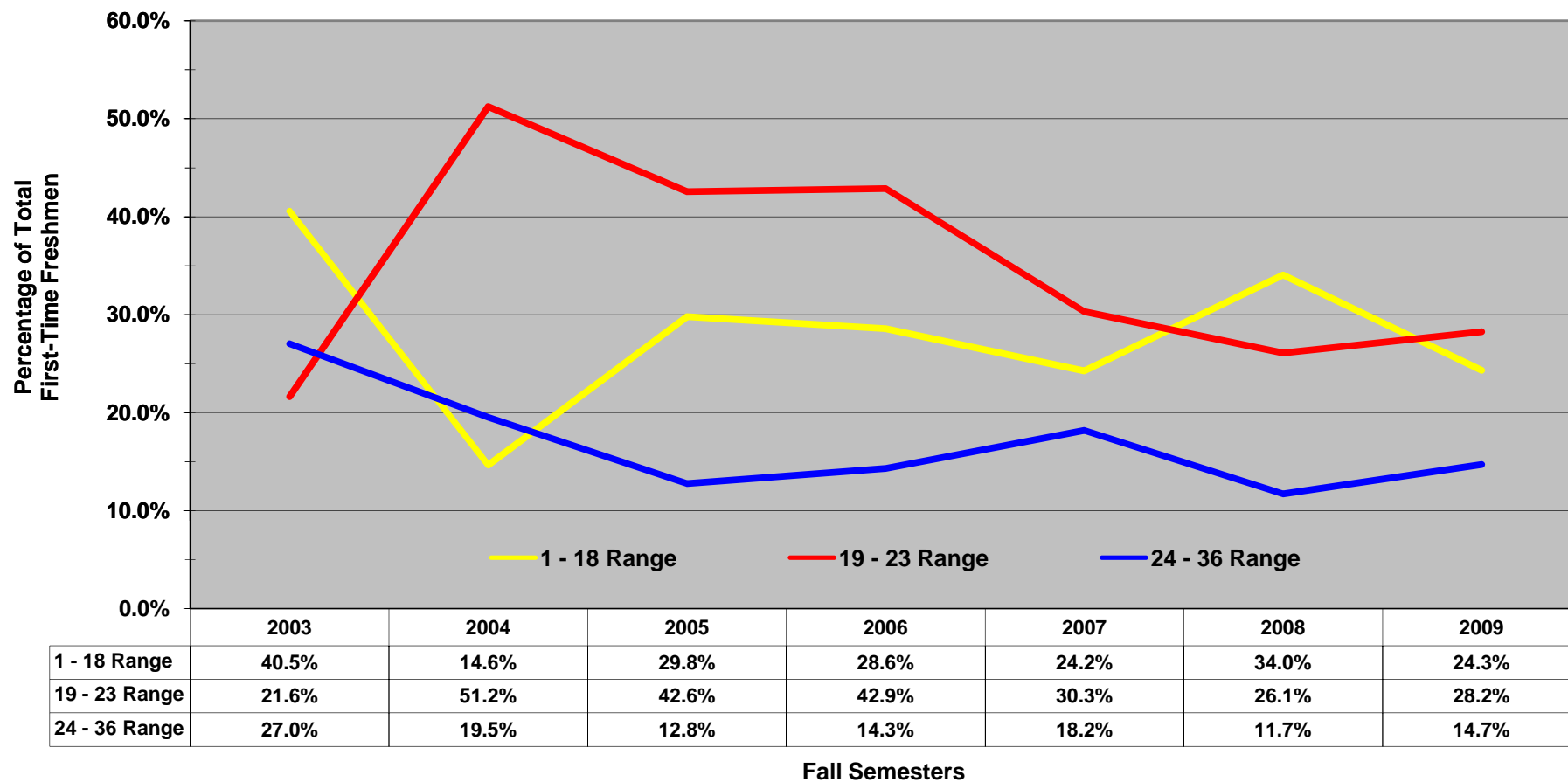
*NOTE: Other Males represents all other races besides African Americans and White Americans.

⁺Includes students without test scores.

Disclaimer: It is important to note that the information in this profile may differ from data reported by the Office of Institutional Research, Planning, & Assessment to other federal, state, and regional agencies due to differences in reporting guidelines, reporting definitions, and the timing of when the information was prepared. Analysis prepared by the Office of Institutional Research, Planning, & Assessment

Historical Fall ACT Composite Scores - Other Males*

Proportion of Fall First-Time Freshmen by ACT Composite Score Ranges



*NOTE: Other Males represents all other races besides African Americans and White Americans.

Disclaimer: It is important to note that the information in this profile may differ from data reported by the Office of Institutional Research, Planning, & Assessment to other federal, state, and regional agencies due to differences in reporting guidelines, reporting definitions, and the timing of when the information was prepared. Analysis prepared by the Office of Institutional Research, Planning, & Assessment