

# Historical Fall ACT Composite Scores

Arkansas State University

## Number of Fall First-Time Freshmen by ACT Composite Scores

Jonesboro Campus

ACT Test Scores	Fall Semesters												1999-2009 High	2009 # Change from High	% of Total			
	1999	2000	2001	2002	2003	2004	2005	2006	2007	2008	2009	1999			2004	2009		
Above State Standards	36	0	0	0	0	0	0	0	0	0	0	0	0	0	0	0.0%	0.0%	0.0%
	35	1	0	0	1	1	0	0	0	0	0	0	0	1	-1	0.1%	0.0%	0.0%
	34	1	0	0	0	0	0	0	1	0	0	1	1	1	0	0.1%	0.0%	0.1%
	33	2	6	3	3	1	1	3	4	3	3	3	1	6	-5	0.1%	0.1%	0.1%
	32	1	7	5	4	4	2	5	6	5	4	8	8	8	0	0.1%	0.1%	0.5%
	31	12	14	14	18	12	5	7	12	8	9	17	18	18	-1	0.7%	0.4%	1.0%
	30	23	32	23	41	30	12	16	32	30	21	29	41	41	-12	1.3%	0.9%	1.7%
	29	27	17	34	23	23	21	27	36	34	33	52	52	52	0	1.6%	1.5%	3.0%
	28	46	58	47	48	39	35	62	63	49	67	50	67	67	-17	2.7%	2.5%	2.9%
	27	91	102	77	80	61	49	64	71	82	77	58	102	102	-44	5.3%	3.6%	3.4%
	26	160	121	123	127	79	51	72	58	72	75	68	160	160	-92	9.3%	3.7%	3.9%
	25	139	144	119	140	101	69	89	114	111	103	99	144	144	-45	8.1%	5.0%	5.7%
	24	159	166	154	166	136	95	115	152	131	141	109	166	166	-57	9.3%	6.9%	6.3%
	23	101	86	105	97	90	68	99	107	103	102	80	107	107	-27	5.9%	4.9%	4.6%
	22	119	120	114	89	108	87	112	120	128	119	101	128	128	-27	6.9%	6.3%	5.9%
	21	127	121	141	107	104	106	147	114	129	157	129	157	157	-28	7.4%	7.7%	7.5%
	20	123	128	153	107	123	117	128	157	137	164	172	172	172	0	7.2%	8.5%	10.0%
19	113	132	122	112	105	109	130	118	136	154	144	154	154	-10	6.6%	7.9%	8.3%	
Below State Standards	18	108	113	93	93	93	94	75	95	113	113	123	123	123	0	6.3%	6.8%	7.1%
	17	93	77	113	87	75	91	83	103	97	125	104	125	125	-21	5.4%	6.6%	6.0%
	16	69	67	84	59	69	98	72	86	97	98	81	98	98	-17	4.0%	7.1%	4.7%
	15	58	54	47	48	49	49	63	65	68	90	64	90	90	-26	3.4%	3.6%	3.7%
	14	43	29	30	43	38	43	43	43	42	36	32	43	43	-11	2.5%	3.1%	1.9%
	13	26	14	17	21	33	20	27	22	15	16	17	33	33	-16	1.5%	1.5%	1.0%
	12	9	7	5	10	8	11	10	7	6	5	9	11	11	-2	0.5%	0.8%	0.5%
	11	4	3	3	3	3	2	1	2	2	3	1	4	4	-3	0.2%	0.1%	0.1%
	1-10	1	0	1	2	7	4	2	0	0	1	1	7	7	-6	0.1%	0.3%	0.1%
<b>Total ACT Scores</b>	<b>1,656</b>	<b>1,618</b>	<b>1,627</b>	<b>1,529</b>	<b>1,392</b>	<b>1,239</b>	<b>1,452</b>	<b>1,588</b>	<b>1,598</b>	<b>1,716</b>	<b>1,550</b>	<b>1,716</b>	<b>1,716</b>	<b>-166</b>	<b>96.6%</b>	<b>89.9%</b>	<b>89.9%</b>	
Other	58	45	77	103	133	139	132	139	135	186	175	186	186	-11	3.4%	10.1%	10.1%	
<b>Total First-Time Freshmen</b>	<b>1,714</b>	<b>1,663</b>	<b>1,704</b>	<b>1,632</b>	<b>1,525</b>	<b>1,378</b>	<b>1,584</b>	<b>1,727</b>	<b>1,733</b>	<b>1,902</b>	<b>1,725</b>	<b>1,902</b>	<b>1,902</b>	<b>-177</b>				
<b>ASU ACT Averages</b>	<b>21.8</b>	<b>22.0</b>	<b>21.7</b>	<b>22.0</b>	<b>21.4</b>	<b>20.6</b>	<b>21.3</b>	<b>21.5</b>	<b>21.4</b>	<b>21.2</b>	<b>21.3</b>	<b>22.0</b>	<b>22.0</b>	<b>-0.7</b>				
<b>National ACT Averages</b>	<b>21.0</b>	<b>21.0</b>	<b>21.0</b>	<b>20.8</b>	<b>20.8</b>	<b>20.9</b>	<b>20.9</b>	<b>21.1</b>	<b>21.2</b>	<b>21.1</b>	<b>21.1</b>	<b>21.2</b>	<b>21.2</b>	<b>-0.1</b>				
<b>State ACT Averages</b>	<b>20.3</b>	<b>20.3</b>	<b>20.1</b>	<b>20.2</b>	<b>20.3</b>	<b>20.4</b>	<b>20.3</b>	<b>20.6</b>	<b>20.5</b>	<b>20.6</b>	<b>20.6</b>	<b>20.6</b>	<b>20.6</b>	<b>0.0</b>				

NOTE: "Other" represents those first-time freshmen who did not submit ACT scores.

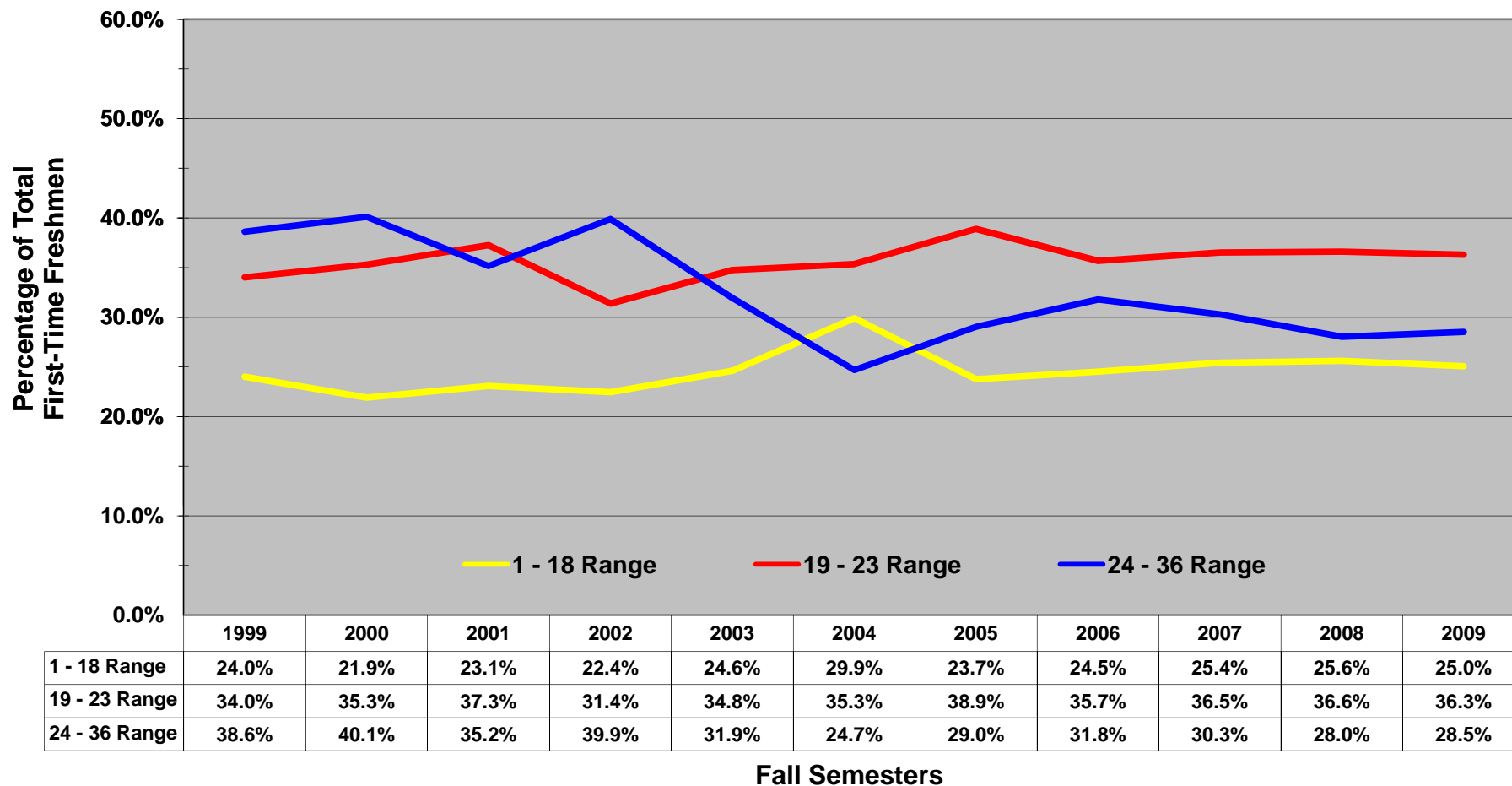
Analysis Prepared by The Office of Institutional Research, Planning, & Assessment; email address: [asuip@astate.edu](mailto:asuip@astate.edu); web address: [www.astate.edu/irp](http://www.astate.edu/irp)

# Historical Fall ACT Composite Scores

Arkansas State University

## Proportion of Fall First-Time Freshmen by ACT Composite Score Ranges

Jonesboro Campus

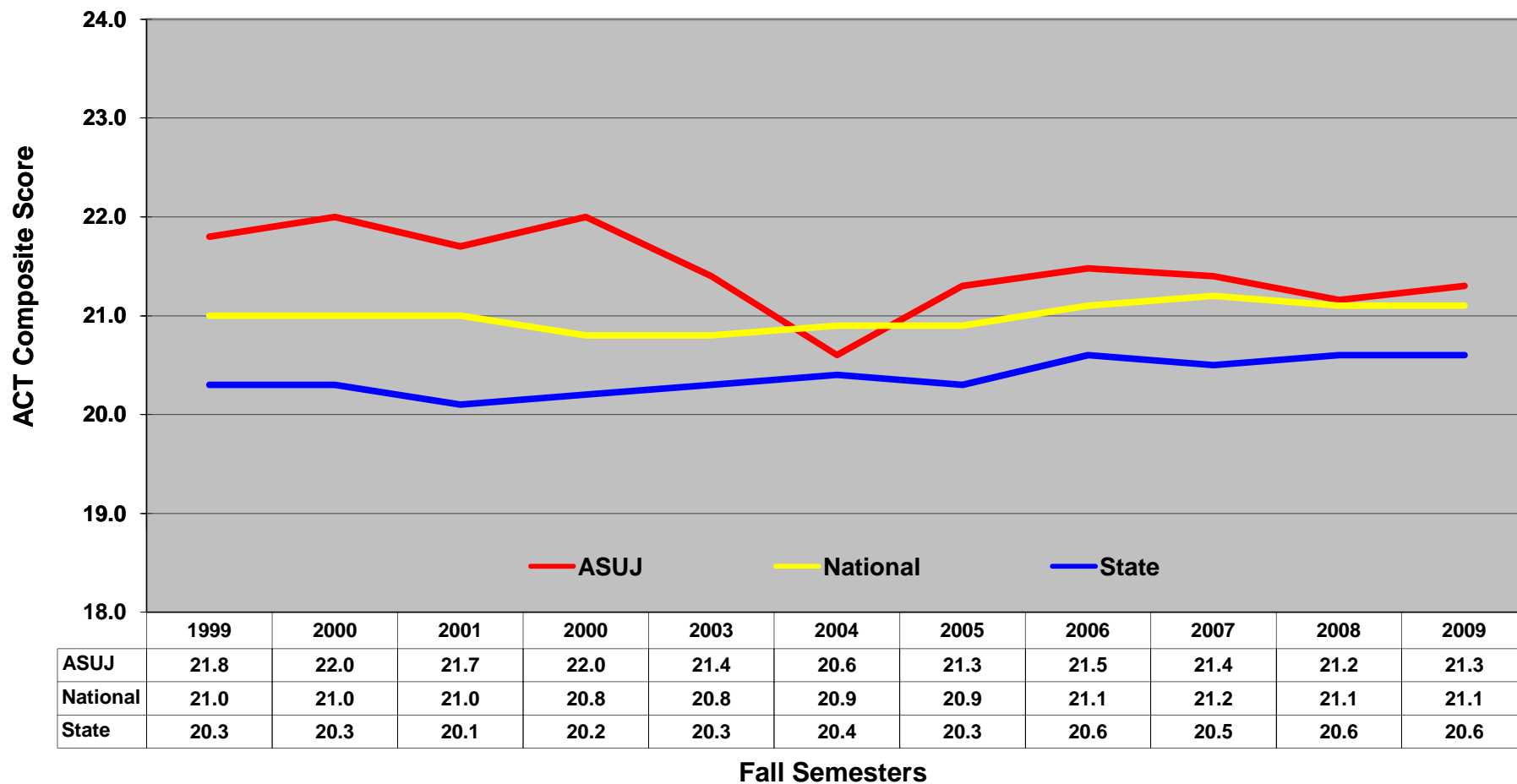


NOTE: Students who did not submit ACT scores are not represented.

Analysis Prepared by The Office of Institutional Research, Planning, & Assessment; email address: [asuip@astate.edu](mailto:asuip@astate.edu); web address: [www.astate.edu/irp](http://www.astate.edu/irp)

# Historical Fall ACT Composite Averages

## Fall First-Time Freshmen by ACT Composite Averages



NOTE: Students who did not submit ACT scores are not represented.

Analysis Prepared by The Office of Institutional Research, Planning, & Assessment; email address: [asuip@astate.edu](mailto:asuip@astate.edu); web address: [www.astate.edu/irp](http://www.astate.edu/irp)

# Historical Fall ACT English Scores

Arkansas State University

## Number of Fall First-Time Freshmen by ACT English Scores

Jonesboro Campus

ACT Test Scores	Fall Semesters											1999-2009 High	2009 # Change from High	% of Total			
	1999	2000	2001	2002	2003	2004	2005	2006	2007	2008	2009			1999	2004	2009	
Above State Standards	36	0	3	0	1	2	0	1	2	2	1	3	3	0	0.0%	0.0%	0.2%
	35	8	8	5	5	7	10	4	8	5	11	6	11	-5	0.5%	0.7%	0.3%
	34	11	14	18	16	13	5	14	34	19	9	16	34	-18	0.6%	0.4%	0.9%
	33	15	9	11	16	18	9	19	23	22	15	17	23	-6	0.9%	0.7%	1.0%
	32	22	19	18	22	23	18	26	30	22	18	23	30	-7	1.3%	1.3%	1.3%
	31	27	39	22	43	20	13	34	27	26	38	32	43	-11	1.6%	0.9%	1.9%
	30	68	65	58	34	61	30	40	59	47	52	47	68	-21	4.0%	2.2%	2.7%
	29	65	66	73	93	58	57	70	61	49	58	56	93	-37	3.8%	4.1%	3.2%
	28	104	98	97	84	61	43	68	63	71	69	52	104	-52	6.1%	3.1%	3.0%
	27	122	111	97	109	80	44	42	66	65	65	49	122	-73	7.1%	3.2%	2.8%
	26	105	82	96	84	88	69	68	93	74	83	85	105	-20	6.1%	5.0%	4.9%
	25	109	101	114	105	94	65	91	100	108	99	96	114	-18	6.4%	4.7%	5.6%
	24	132	127	123	114	75	69	88	93	93	104	70	132	-62	7.7%	5.0%	4.1%
	23	87	107	106	85	81	61	75	72	92	97	77	107	-30	5.1%	4.4%	4.5%
22	100	104	118	102	89	75	120	114	125	127	132	132	0	5.8%	5.4%	7.7%	
21	97	122	114	96	99	89	119	106	140	142	140	142	-2	5.7%	6.5%	8.1%	
20	96	105	98	96	111	110	95	128	114	126	129	129	0	5.6%	8.0%	7.5%	
19	122	113	107	91	78	93	102	102	116	110	108	122	-14	7.1%	6.7%	6.3%	
Below State Standards	18	76	57	69	61	59	70	73	78	58	84	65	84	-19	4.4%	5.1%	3.8%
	17	66	73	72	64	54	48	65	65	59	84	84	84	0	3.9%	3.5%	4.9%
	16	55	52	64	43	50	62	59	59	59	90	63	90	-27	3.2%	4.5%	3.7%
	15	45	48	50	45	58	58	53	67	74	71	74	74	0	2.6%	4.2%	4.3%
	14	32	28	32	43	35	56	40	47	62	55	37	62	-25	1.9%	4.1%	2.1%
	13	26	23	22	18	16	29	20	35	28	43	28	43	-15	1.5%	2.1%	1.6%
	12	26	15	16	21	19	16	17	17	25	26	21	26	-5	1.5%	1.2%	1.2%
	11	23	10	15	19	13	12	16	17	21	16	20	23	-3	1.3%	0.9%	1.2%
1-10	17	19	12	19	30	28	33	22	22	23	20	33	-13	1.0%	2.0%	1.2%	
<b>Total ACT Scores</b>	<b>1,656</b>	<b>1,618</b>	<b>1,627</b>	<b>1,529</b>	<b>1,392</b>	<b>1,239</b>	<b>1,452</b>	<b>1,588</b>	<b>1,598</b>	<b>1,716</b>	<b>1,550</b>	<b>1,716</b>	<b>-166</b>	<b>96.6%</b>	<b>89.9%</b>	<b>89.9%</b>	
Other	58	45	77	103	133	139	132	139	135	186	175	186	-11	3.4%	10.1%	10.1%	
<b>Total First-Time Freshmen</b>	<b>1,714</b>	<b>1,663</b>	<b>1,704</b>	<b>1,632</b>	<b>1,525</b>	<b>1,378</b>	<b>1,584</b>	<b>1,727</b>	<b>1,733</b>	<b>1,902</b>	<b>1,725</b>	<b>1,902</b>	<b>-177</b>				
<b>ASU ACT Averages</b>	<b>22.6</b>	<b>22.8</b>	<b>22.6</b>	<b>22.7</b>	<b>22.4</b>	<b>21.3</b>	<b>22.0</b>	<b>22.3</b>	<b>21.9</b>	<b>21.6</b>	<b>21.8</b>	<b>22.8</b>	<b>-1.0</b>				
<b>National ACT Averages</b>	<b>20.5</b>	<b>20.5</b>	<b>20.5</b>	<b>20.2</b>	<b>20.3</b>	<b>20.4</b>	<b>20.4</b>	<b>20.6</b>	<b>20.7</b>	<b>20.6</b>	<b>20.6</b>	<b>20.7</b>	<b>-0.1</b>				
<b>State ACT Averages</b>	<b>20.6</b>	<b>20.7</b>	<b>20.4</b>	<b>20.5</b>	<b>20.7</b>	<b>20.6</b>	<b>20.5</b>	<b>20.7</b>	<b>20.5</b>	<b>20.7</b>	<b>20.6</b>	<b>20.7</b>	<b>-0.1</b>				

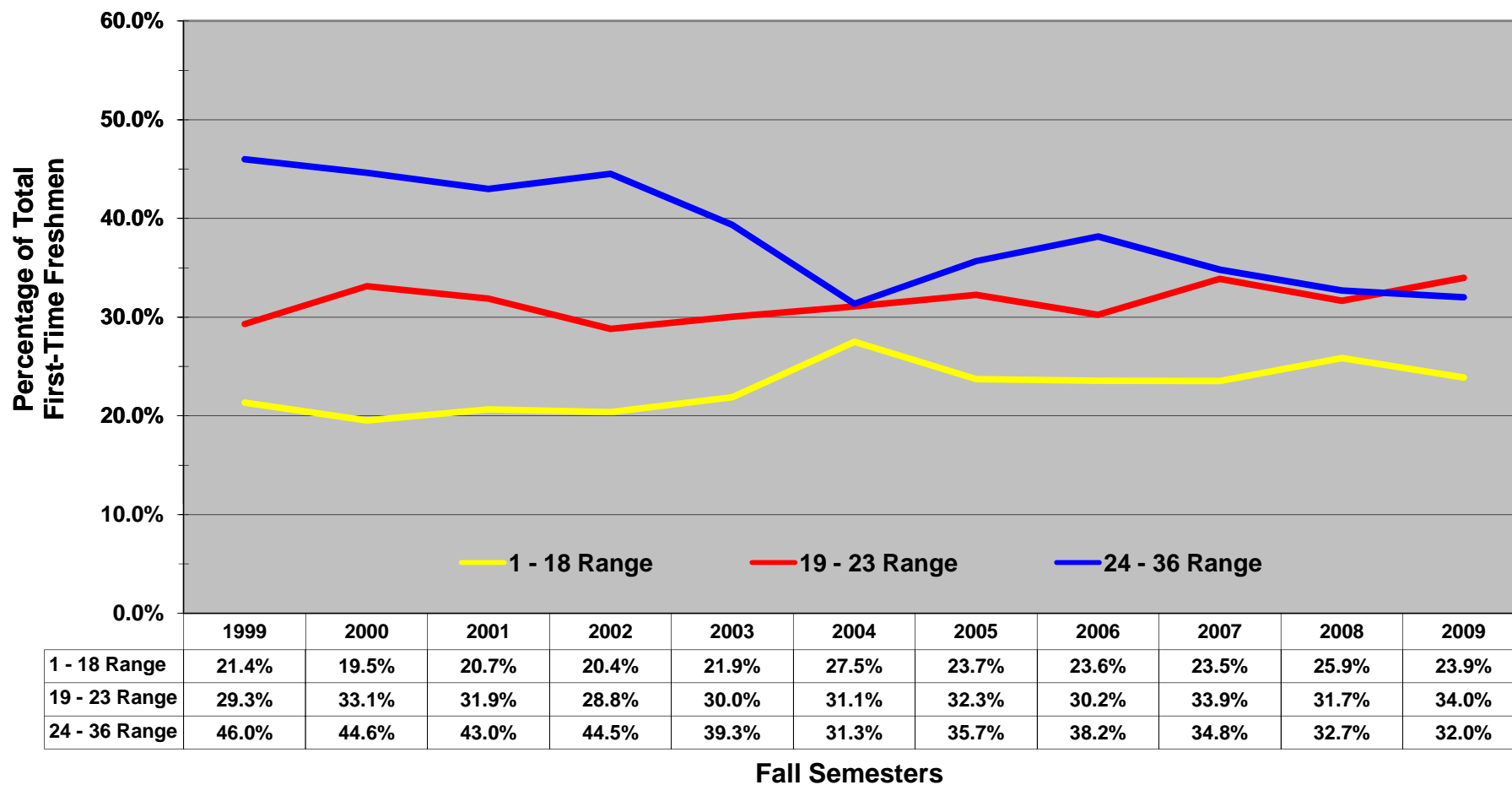
NOTE: "Other" represents those first-time freshmen who did not submit ACT scores.  
 Analysis Prepared by The Office of Institutional Research, Planning, & Assessment; email address: [asuipr@astate.edu](mailto:asuipr@astate.edu); web address: [www.astate.edu/irp](http://www.astate.edu/irp)

# Historical Fall ACT English Scores

Arkansas State University

## Proportion of Fall First-Time Freshmen by ACT English Score Ranges

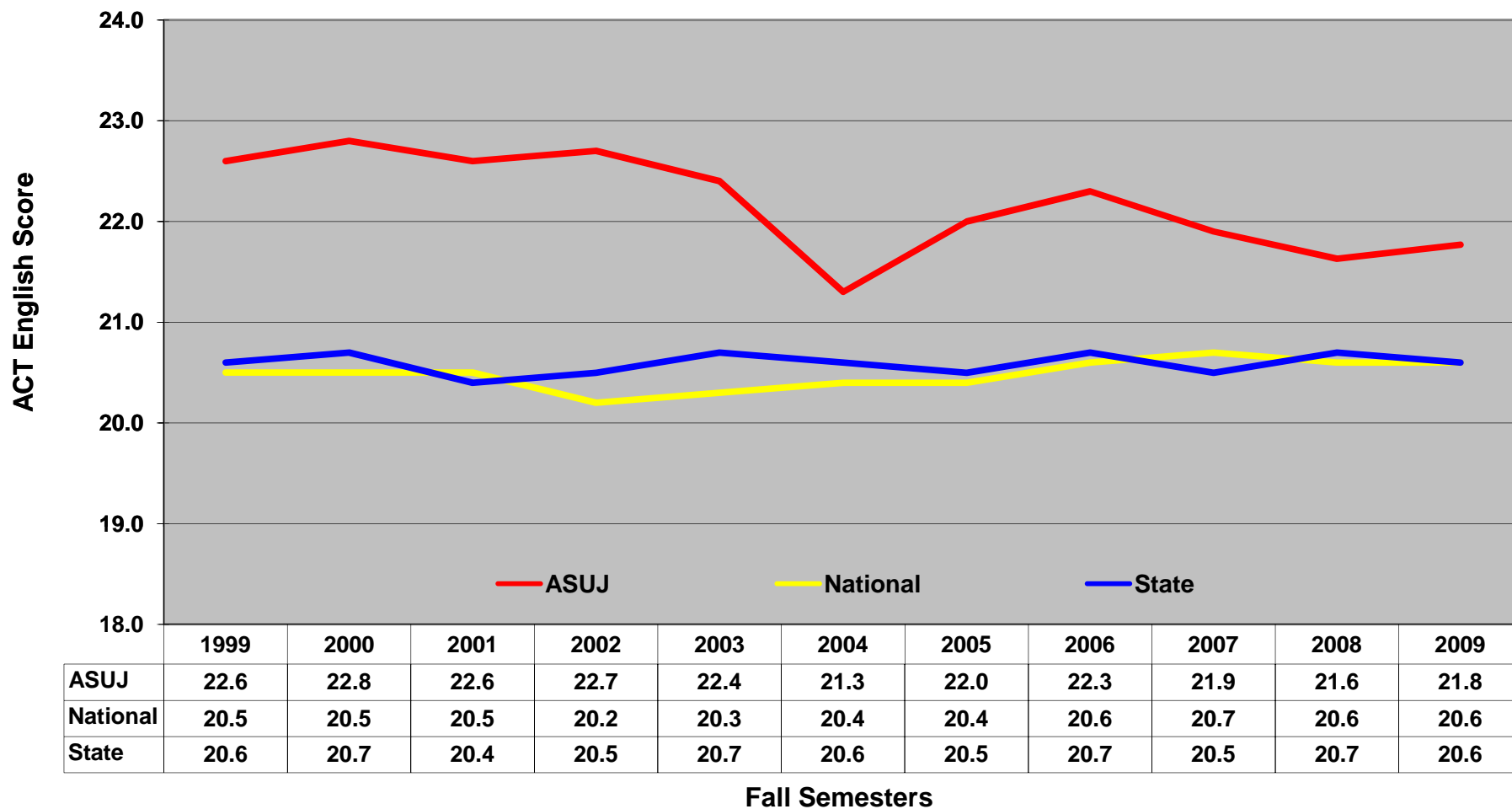
Jonesboro Campus



NOTE: Students who did not submit ACT scores are not represented.  
 Analysis Prepared by The Office of Institutional Research, Planning, & Assessment; email address: [asuirp@astate.edu](mailto:asuirp@astate.edu); web address: [www.astate.edu/irp](http://www.astate.edu/irp)

# Historical Fall ACT English Averages

## Fall First-Time Freshmen by ACT English Averages



NOTE: Students who did not submit ACT scores are not represented.  
 Analysis Prepared by The Office of Institutional Research, Planning, & Assessment; email address: [asuip@astate.edu](mailto:asuip@astate.edu); web address: [www.astate.edu/irp](http://www.astate.edu/irp)

# Historical Fall ACT Math Scores

Arkansas State University

## Number of Fall First-Time Freshmen by ACT Math Scores

Jonesboro Campus

ACT Test Scores	Fall Semesters											1999-2009 High	2009 # Change from High	% of Total			
	1999	2000	2001	2002	2003	2004	2005	2006	2007	2008	2009			1999	2004	2009	
Above State Standards	36	2	0	0	0	1	0	0	1	0	0	1	2	-1	0.1%	0.0%	0.1%
	35	0	0	1	1	1	0	1	1	2	2	1	2	-1	0.0%	0.0%	0.1%
	34	1	0	3	0	0	2	1	6	3	3	2	6	-4	0.1%	0.1%	0.1%
	33	2	2	0	2	2	3	2	2	3	4	9	9	0	0.1%	0.2%	0.5%
	32	5	4	6	11	8	3	8	5	7	11	9	11	-2	0.3%	0.2%	0.5%
	31	6	11	12	7	8	5	11	7	14	12	17	17	0	0.4%	0.4%	1.0%
	30	13	17	13	21	7	7	9	13	9	18	15	21	-6	0.8%	0.5%	0.9%
	29	12	39	15	40	21	17	34	29	24	27	34	40	-6	0.7%	1.2%	2.0%
	28	35	38	46	44	35	26	34	32	36	54	49	54	-5	2.0%	1.9%	2.8%
	27	59	55	60	72	47	42	56	70	87	53	52	87	-35	3.4%	3.0%	3.0%
	26	77	80	84	60	80	50	71	93	63	87	77	93	-16	4.5%	3.6%	4.5%
	25	106	110	92	110	85	53	80	101	101	113	86	113	-27	6.2%	3.8%	5.0%
	24	101	114	85	76	83	85	103	119	116	127	97	127	-30	5.9%	6.2%	5.6%
	23	106	93	94	107	89	75	101	104	106	102	89	107	-18	6.2%	5.4%	5.2%
	22	152	105	107	108	85	66	78	98	98	93	83	152	-69	8.9%	4.8%	4.8%
21	106	105	111	79	87	70	96	95	96	109	102	111	-9	6.2%	5.1%	5.9%	
20	142	105	156	110	91	70	123	117	92	110	109	156	-47	8.3%	5.1%	6.3%	
19	150	168	134	138	120	108	97	112	128	135	132	168	-36	8.8%	7.8%	7.7%	
Below State Standards	18	146	136	150	120	126	98	113	143	126	144	120	150	-30	8.5%	7.1%	7.0%
	17	136	148	164	125	104	126	121	141	136	144	163	164	-1	7.9%	9.1%	9.4%
	16	105	127	130	115	134	140	135	141	164	201	159	201	-42	6.1%	10.2%	9.2%
	15	104	82	89	89	82	110	86	90	115	108	99	115	-16	6.1%	8.0%	5.7%
	14	50	46	43	64	58	50	53	55	37	44	30	64	-34	2.9%	3.6%	1.7%
	13	24	16	17	18	27	19	25	10	12	6	11	27	-16	1.4%	1.4%	0.6%
	12	14	14	8	8	3	10	7	2	4	5	4	14	-10	0.8%	0.7%	0.2%
	11	1	1	1	3	3	0	4	1	0	3	0	4	-4	0.1%	0.0%	0.0%
1-10	1	2	6	1	5	4	3	0	1	1	0	6	-6	0.1%	0.3%	0.0%	
<b>Total ACT Scores</b>	<b>1,656</b>	<b>1,618</b>	<b>1,627</b>	<b>1,529</b>	<b>1,392</b>	<b>1,239</b>	<b>1,452</b>	<b>1,588</b>	<b>1,598</b>	<b>1,716</b>	<b>1,550</b>	<b>1,716</b>	<b>-166</b>	<b>96.6%</b>	<b>89.9%</b>	<b>89.9%</b>	
Other	58	45	77	103	133	139	132	139	135	186	175	186	-11	3.4%	10.1%	10.1%	
<b>Total First-Time Freshmen</b>	<b>1,714</b>	<b>1,663</b>	<b>1,704</b>	<b>1,632</b>	<b>1,525</b>	<b>1,378</b>	<b>1,584</b>	<b>1,727</b>	<b>1,733</b>	<b>1,902</b>	<b>1,725</b>	<b>1,902</b>	<b>-177</b>				
<b>ASU ACT Averages</b>	<b>20.5</b>	<b>20.7</b>	<b>20.5</b>	<b>20.8</b>	<b>20.4</b>	<b>19.9</b>	<b>20.6</b>	<b>20.8</b>	<b>20.7</b>	<b>20.7</b>	<b>20.8</b>	<b>20.8</b>	<b>0.0</b>				
<b>National ACT Averages</b>	<b>20.7</b>	<b>20.7</b>	<b>20.7</b>	<b>20.6</b>	<b>20.6</b>	<b>20.7</b>	<b>20.7</b>	<b>20.8</b>	<b>21.0</b>	<b>21.0</b>	<b>21.0</b>	<b>21.0</b>	<b>0.0</b>				
<b>State ACT Averages</b>	<b>19.2</b>	<b>19.2</b>	<b>19.0</b>	<b>19.2</b>	<b>19.3</b>	<b>19.5</b>	<b>19.6</b>	<b>19.9</b>	<b>19.9</b>	<b>20.1</b>	<b>20.1</b>	<b>20.1</b>	<b>0.0</b>				

NOTE: "Other" represents those first-time freshmen who did not submit ACT scores.

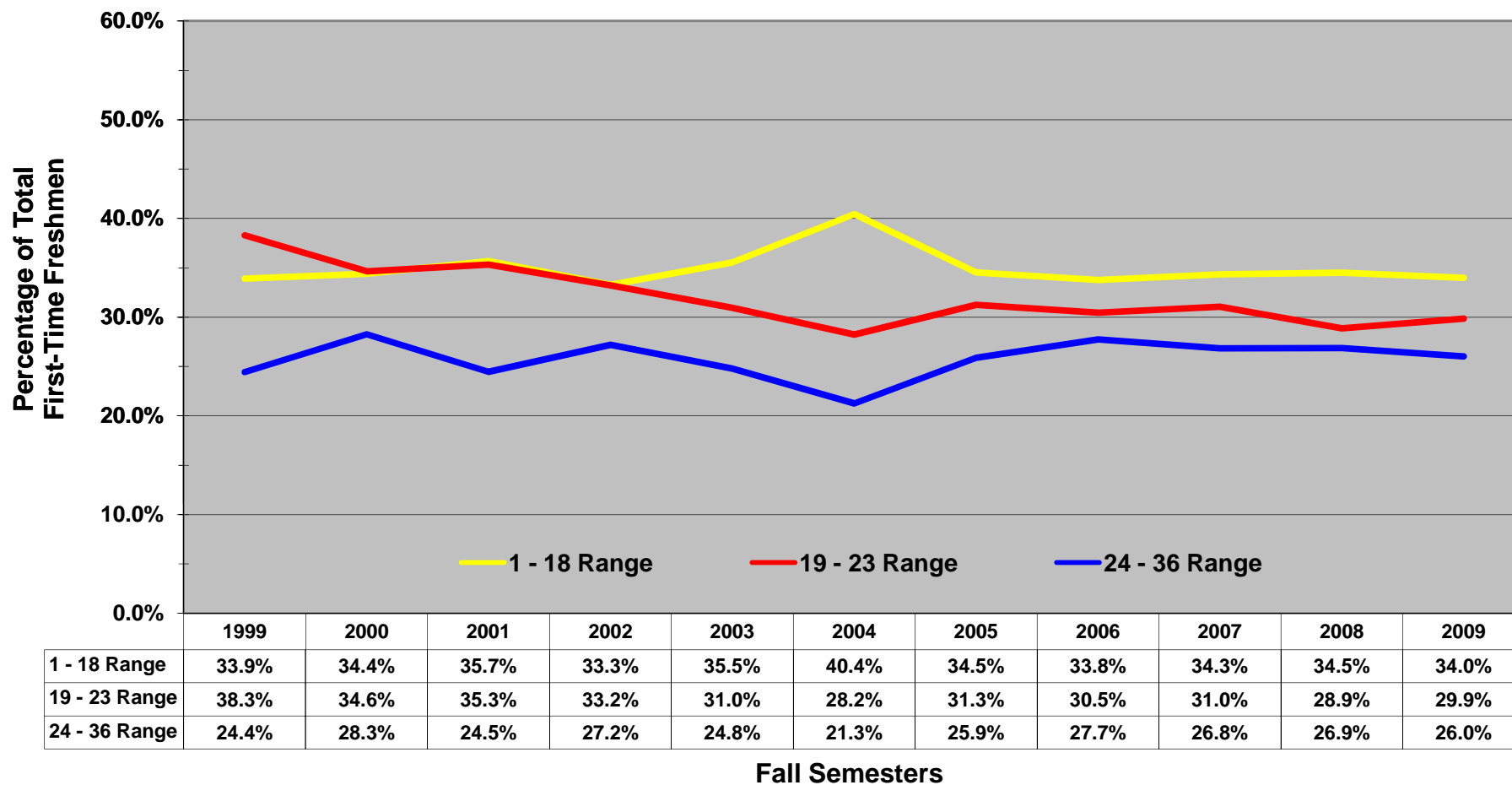
Analysis Prepared by The Office of Institutional Research, Planning, & Assessment; email address: asuirp@astate.edu; web address: www.astate.edu/irp

# Historical Fall ACT Math Scores

Arkansas State University

## Proportion of Fall First-Time Freshmen by ACT Math Score Ranges

Jonesboro Campus



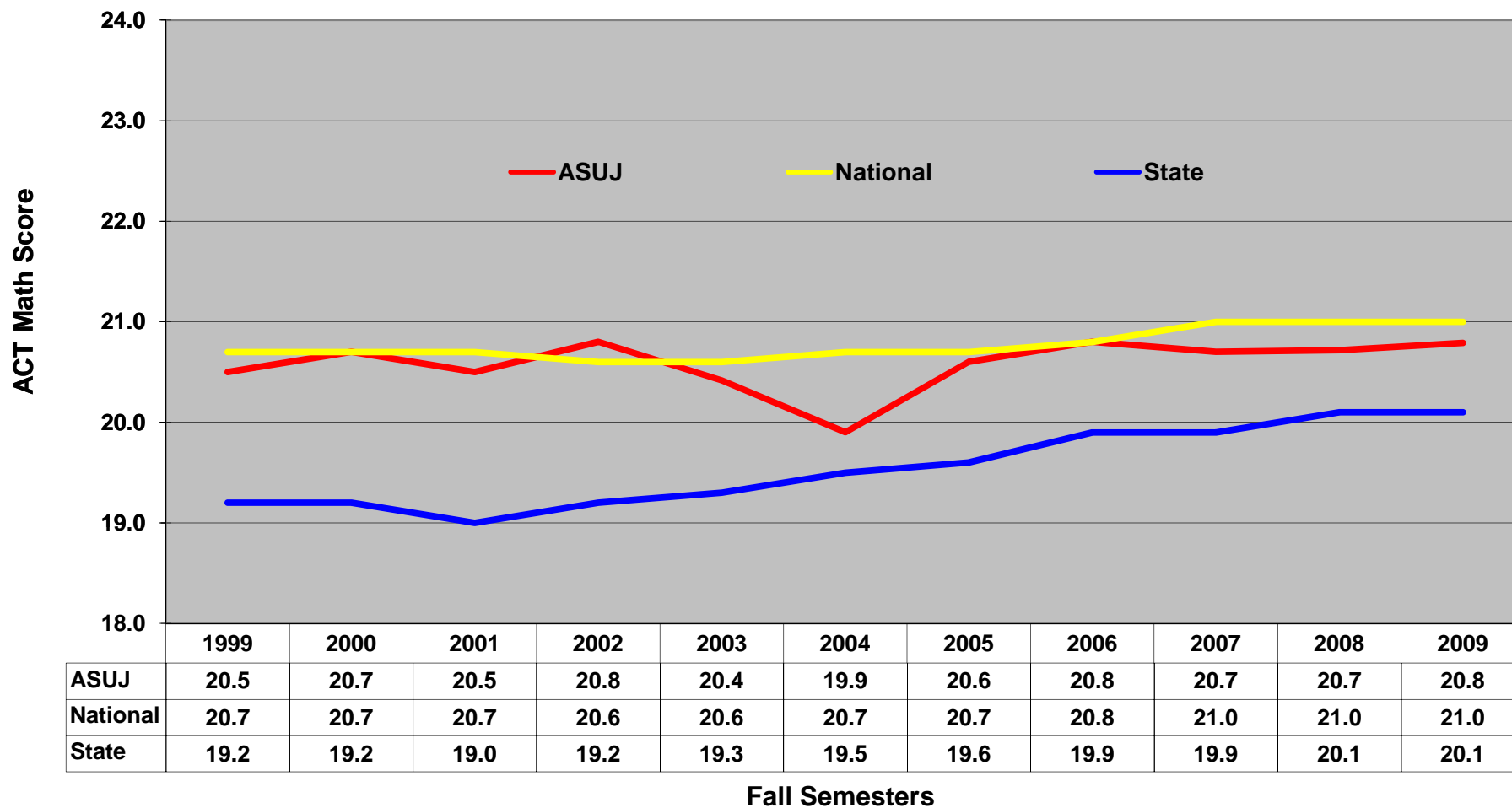
NOTE: Students who did not submit ACT scores are not represented.  
 Analysis Prepared by The Office of Institutional Research, Planning, & Assessment; email address: [asuip@astate.edu](mailto:asuip@astate.edu); web address: [www.astate.edu/irp](http://www.astate.edu/irp)

# Historical Fall ACT Math Averages

## Fall First-Time Freshmen by ACT Math Averages

Arkansas State University

Jonesboro Campus



NOTE: Students who did not submit ACT scores are not represented.

Analysis Prepared by The Office of Institutional Research, Planning, & Assessment; email address: [asuip@astate.edu](mailto:asuip@astate.edu); web address: [www.astate.edu/irp](http://www.astate.edu/irp)